

ESM1 Antibody

Catalog No: #47244

Orders: order@signalwayantibody.comSupport: tech@signalwayantibody.com

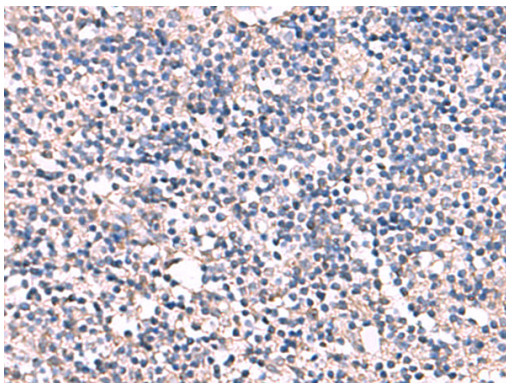
Description

Product Name	ESM1 Antibody
Host Species	Rabbit
Clonality	Polyclonal
Purification	Antigen affinity purification
Applications	IHC
Species Reactivity	Hu
Specificity	The antibody detects endogenous levels of total ESM1 protein.
Immunogen Type	Peptide
Immunogen Description	Fusion protein of human ESM1
Target Name	ESM1
Other Names	endocan
Accession No.	Swiss-Prot#:Q9NQ30NCBI Gene ID:11082Gene Accssion:BC011989
Uniprot	Q9NQ30
GeneID	11082;
Concentration	1mg/ml
Formulation	Rabbit IgG in pH7.4 PBS, 0.05% NaN ₃ , 40% Glycerol.
Storage	Store at -20°C

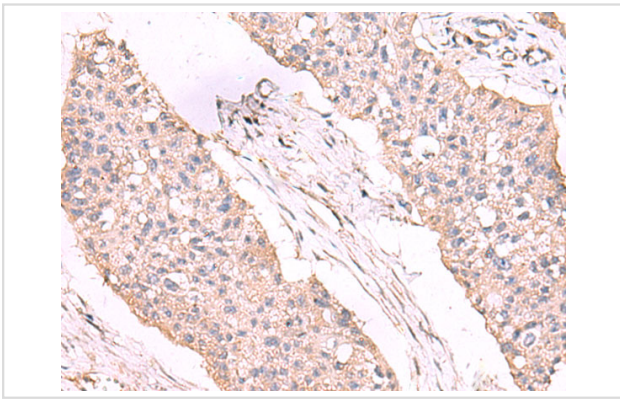
Application Details

IHC dilution:1: 50-300

Images



The image is immunohistochemistry of paraffin-embedded Human tonsil tissue using 47244(ESM1 Antibody) at dilution 1/55.(Original magnification: 200)



The image is immunohistochemistry of paraffin-embedded Human esophagus cancer tissue using 47244(ESM1 Antibody) at dilution 1/55.(Original magnification: 200)

Background

This gene encodes a secreted protein which is mainly expressed in the endothelial cells in human lung and kidney tissues. The expression of this gene is regulated by cytokines, suggesting that it may play a role in endothelium-dependent pathological disorders. The transcript contains multiple polyadenylation and mRNA instability signals. Two transcript variants encoding different isoforms have been found for this gene.

Note: This product is for in vitro research use only