

# SNRPB2 Antibody

Catalog No: #47368



Orders: [order@signalwayantibody.com](mailto:order@signalwayantibody.com)  
Support: [tech@signalwayantibody.com](mailto:tech@signalwayantibody.com)

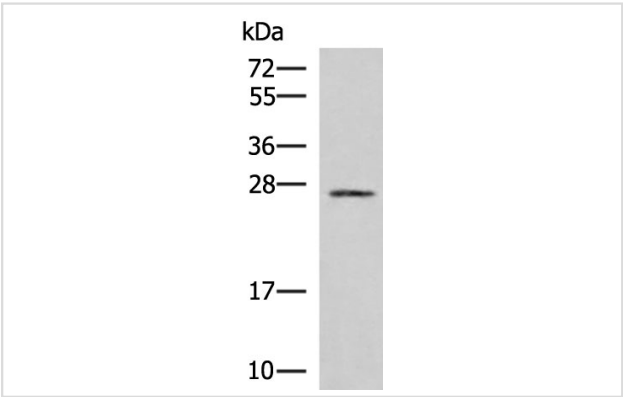
## Description

Product Name	SNRPB2 Antibody
Host Species	Rabbit
Clonality	Polyclonal
Purification	Antigen affinity purification
Applications	WB, IHC
Species Reactivity	Hu, Ms
Specificity	The antibody detects endogenous levels of total SNRPB2 protein.
Immunogen Type	Peptide
Immunogen Description	Fusion protein of human SNRPB2
Target Name	SNRPB2
Other Names	Msl1; U2B"
Accession No.	Swiss-Prot#:P08579NCBI Gene ID:6629Gene Accssion:BC018022
Uniprot	P08579
GeneID	6629;
Calculated MW	25 kDa
Concentration	1.6
Formulation	Rabbit IgG in pH7.4 PBS, 0.05% NaN3, 40% Glycerol.
Storage	Store at -20°C

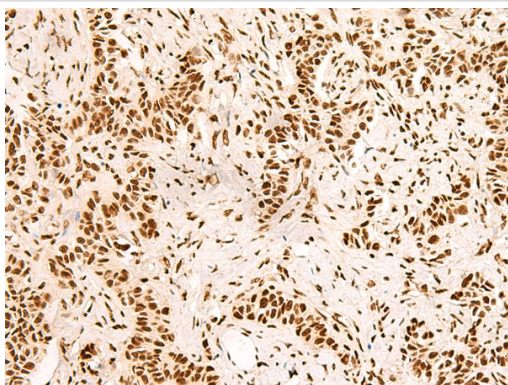
## Application Details

WB dilution:1:1000-5000  
IHC dilution:1: 50-300

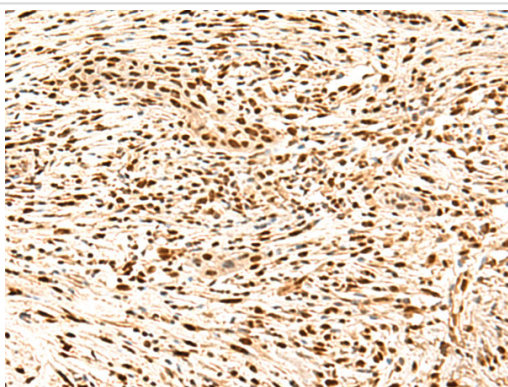
## Images



Gel: 12%SDS-PAGE, Lysate: 40 µg, Lane: 293T cell lysate,  
Primary antibody:47368(SNRPB2 Antibody) at dilution 1/1000,  
Secondary antibody: Goat anti rabbit IgG at 1/5000 dilution,  
Exposure time: 15 seconds



The image is immunohistochemistry of paraffin-embedded Human ovarian cancer tissue using 47368(SNRPB2 Antibody) at dilution 1/90.(Original magnification: 200)



The image is immunohistochemistry of paraffin-embedded Human esophagus cancer tissue using 47368(SNRPB2 Antibody) at dilution 1/90.(Original magnification: 200)

## Background

The protein encoded by this gene associates with stem loop IV of U2 small nuclear ribonucleoprotein (U2 snRNP) in the presence of snRNP-A'. The encoded protein may play a role in pre-mRNA splicing. Autoantibodies from patients with systemic lupus erythematosus frequently recognize epitopes on the encoded protein. Two transcript variants encoding the same protein have been found for this gene.?

Note: This product is for in vitro research use only