

MYL1 Antibody

Catalog No: #47440

Orders: order@signalwayantibody.comSupport: tech@signalwayantibody.com

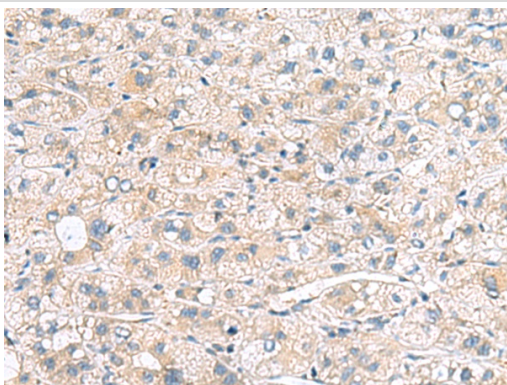
Description

Product Name	MYL1 Antibody
Host Species	Rabbit
Clonality	Polyclonal
Purification	Antigen affinity purification
Applications	IHC
Species Reactivity	Hu, Ms, Rt
Specificity	The antibody detects endogenous levels of total MYL1 protein.
Immunogen Type	Peptide
Immunogen Description	Fusion protein of human MYL1
Target Name	MYL1
Other Names	MLC1F; MLC3F
Accession No.	Swiss-Prot#:P05976NCBI Gene ID:4632Gene Accssion:BC005318
Uniprot	P05976
GeneID	4632;
Concentration	1.3
Formulation	Rabbit IgG in pH7.4 PBS, 0.05% NaN ₃ , 40% Glycerol.
Storage	Store at -20°C

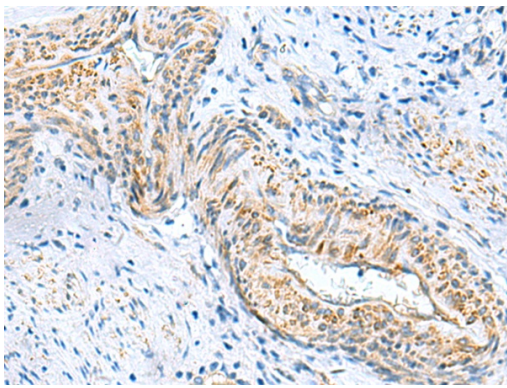
Application Details

IHC dilution:1: 50-200

Images



The image is immunohistochemistry of paraffin-embedded Human liver cancer tissue using 47440(MYL1 Antibody) at dilution 1/75.(Original magnification: 200)



The image is immunohistochemistry of paraffin-embedded Human cervical cancer tissue using 47440(MYL1 Antibody) at dilution 1/75.(Original magnification: 200)

Background

Myosin is a hexameric ATPase cellular motor protein. It is composed of two heavy chains, two nonphosphorylatable alkali light chains, and two phosphorylatable regulatory light chains. This gene encodes a myosin alkali light chain expressed in fast skeletal muscle. Two transcript variants have been identified for this gene.

Note: This product is for in vitro research use only