

## WDR6 Antibody

Catalog No: #47473

Orders: [order@signalwayantibody.com](mailto:order@signalwayantibody.com)Support: [tech@signalwayantibody.com](mailto:tech@signalwayantibody.com)

## Description

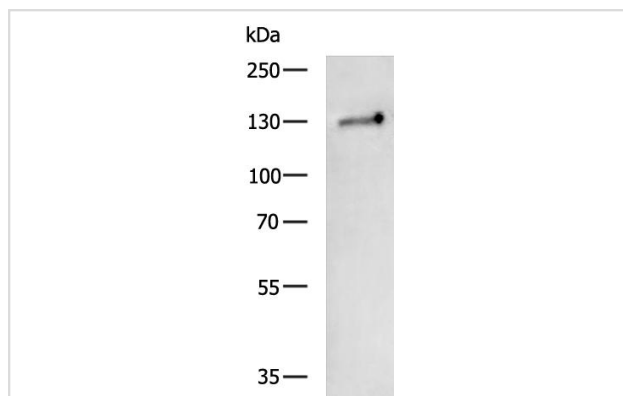
Product Name	WDR6 Antibody
Host Species	Rabbit
Clonality	Polyclonal
Purification	Antigen affinity purification
Applications	WB;IHC
Species Reactivity	Hu, Ms, Rt
Specificity	The antibody detects endogenous levels of total WDR6 protein.
Immunogen Type	Peptide
Immunogen Description	Synthetic peptide of human WDR6
Target Name	WDR6
Accession No.	Swiss-Prot#:Q9NNW5NCBI Gene ID:11180Gene Accssion:NP_060501
Uniprot	Q9NNW5
GeneID	11180;
Calculated MW	122 kDa
Concentration	1.5 mg/ml
Formulation	Rabbit IgG in pH7.4 PBS, 0.05% NaN <sub>3</sub> , 40% Glycerol.
Storage	Store at -20°C

## Application Details

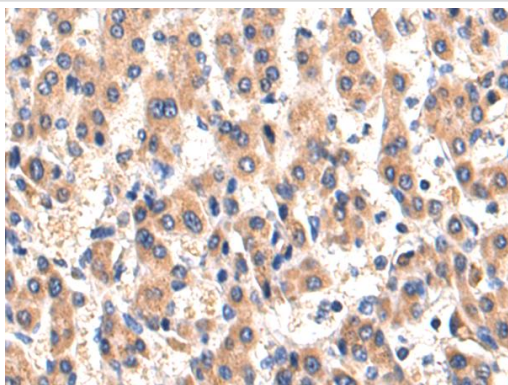
WB 1:500-2000;

IHC 1:50-200

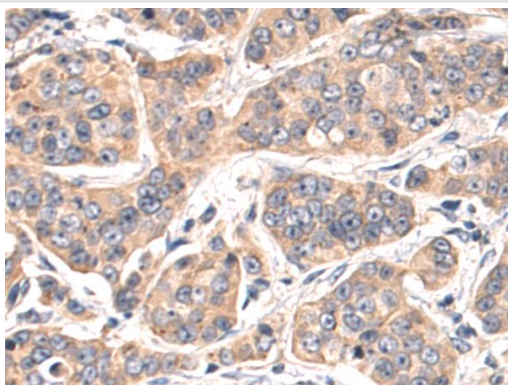
## Images



Gel: 6%SDS-PAGE  
Lysate: 40 ug  
Lane: HepG2 cell lysate  
Primary antibody: WDR6 Antibody at dilution 1/1000  
Secondary antibody: HRP-conjugated Goat anti rabbit IgG at 1/5000 dilution



The image on the left is immunohistochemistry of paraffinembedded Human liver cancer tissue using WDR6 Antibody at dilution 1/60



The image on the left is immunohistochemistry of paraffinembedded Human breast cancer tissue using WDR6 Antibody at dilution 1/60

## Background

This gene encodes a member of the WD repeat protein family. WD repeats are minimally conserved regions of approximately 40 amino acids typically bracketed by gly-his and trp-aspartic acid (GH-WD), which may facilitate formation of heterotrimeric or multiprotein complexes. The encoded protein interacts with serine/threonine kinase 11, and is implicated in cell growth arrest.

Note: This product is for in vitro research use only