

TRIM8 Antibody

Catalog No: #47574

Orders: order@signalwayantibody.comSupport: tech@signalwayantibody.com

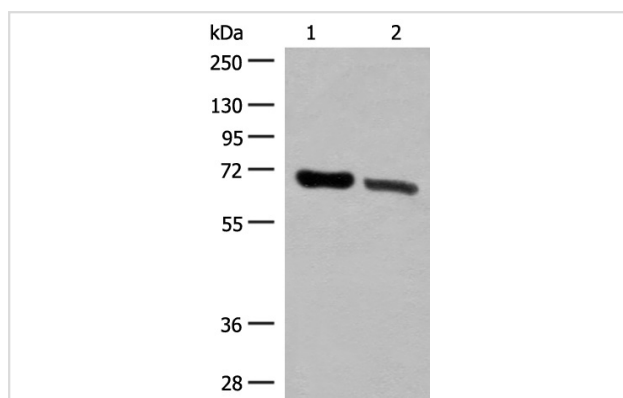
Description

Product Name	TRIM8 Antibody
Host Species	Rabbit
Clonality	Polyclonal
Purification	Antigen affinity purification
Applications	WB
Species Reactivity	Hu, Ms
Specificity	The antibody detects endogenous levels of total TRIM8 protein.
Immunogen Type	Peptide
Immunogen Description	Synthetic peptide of human TRIM8
Target Name	TRIM8
Other Names	GERP; RNF27
Accession No.	Swiss-Prot#:Q9BZR9NCBI Gene ID:81603Gene Accssion:NP_112174
Uniprot	Q9BZR9
GeneID	81603;
Calculated MW	61 kDa
Concentration	1.7
Formulation	Rabbit IgG in pH7.4 PBS, 0.05% NaN ₃ , 40% Glycerol.
Storage	Store at -20°C

Application Details

WB dilution:1:500-2000

Images



Gel: 8%SDS-PAGE, Lysate: 40 µg, Lane 1-2: Human placenta tissue and Human fetal brain tissue lysates, Primary antibody:47574(TRIM8 Antibody) at dilution 1/500, Secondary antibody: Goat anti rabbit IgG at 1/8000 dilution, Exposure time: 1 minute

Background

This gene encodes a member of the tripartite motif (TRIM) protein family. Based on similarities to other proteins, the encoded protein is suspected to be an E3 ubiquitin-protein ligase. Regulation of this gene may be altered in some cancers. Mutations resulting in a truncated protein product have

been observed in early-onset epileptic encephalopathy (EOEE).

Note: This product is for in vitro research use only