

ROMO1 Antibody

Catalog No: #47598



Orders: order@signalwayantibody.com
Support: tech@signalwayantibody.com

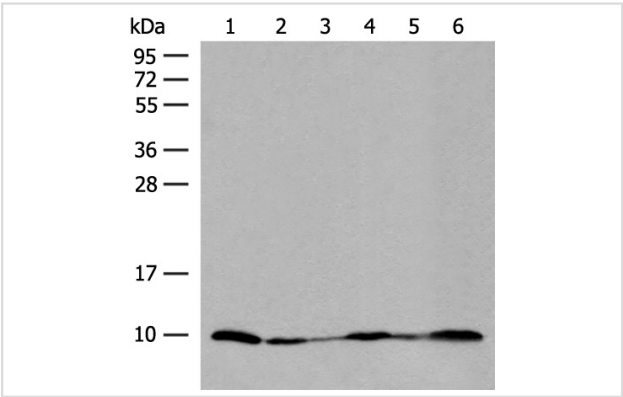
Description

Product Name	ROMO1 Antibody
Host Species	Rabbit
Clonality	Polyclonal
Purification	Antigen affinity purification
Applications	WB, IHC
Species Reactivity	Hu, Ms
Specificity	The antibody detects endogenous levels of total ROMO1 protein.
Immunogen Type	Peptide
Immunogen Description	Synthetic peptide of human ROMO1
Target Name	ROMO1
Other Names	MTGM; MTGMP; C20orf52; bA353C18.2
Accession No.	Swiss-Prot#:P60602NCBI Gene ID:140823Gene Accssion:NP_542786
Uniprot	P60602
GeneID	140823;
Calculated MW	8 kDa
Concentration	0.7
Formulation	Rabbit IgG in pH7.4 PBS, 0.05% NaN3, 40% Glycerol.
Storage	Store at -20°C

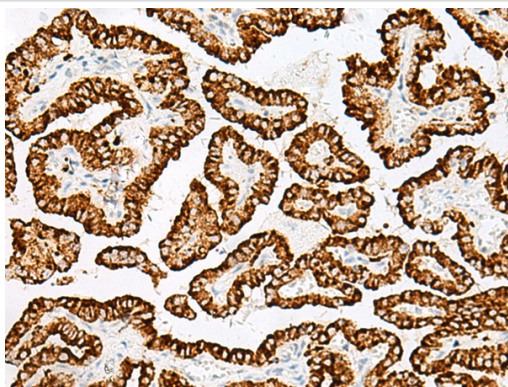
Application Details

WB dilution:1:200-1000
IHC dilution:1: 30-150

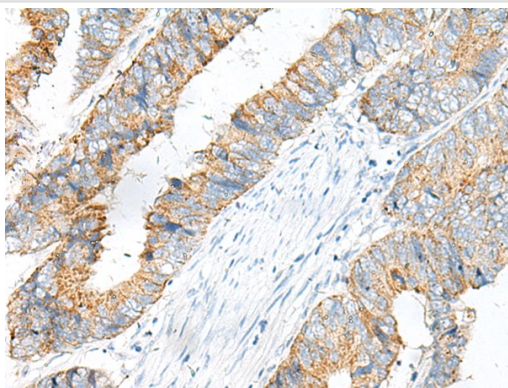
Images



Gel: 12%SDS-PAGE, Lysate: 40 µg, Lane 1-6: Mouse heart tissue, Human heart tissue, HEPG2 cell, PC-3 cell, 231 cell and 293T cell lysates, Primary antibody:47598(ROMO1 Antibody) at dilution 1/200, Secondary antibody: Goat anti rabbit IgG at 1/8000 dilution, Exposure time: 2 minutes



The image is immunohistochemistry of paraffin-embedded Human thyroid cancer tissue using 47598(ROMO1 Antibody) at dilution 1/25.(Original magnification: 200)



The image is immunohistochemistry of paraffin-embedded Human colorectal cancer tissue using 47598(ROMO1 Antibody) at dilution 1/25.(Original magnification: 200)

Background

The protein encoded by this gene is a mitochondrial membrane protein that is responsible for increasing the level of reactive oxygen species (ROS) in cells. The protein also has antimicrobial activity against a variety of bacteria by inducing bacterial membrane breakage.

Note: This product is for in vitro research use only