

## ADGRG1 Antibody

Catalog No: #47600

Orders: [order@signalwayantibody.com](mailto:order@signalwayantibody.com)Support: [tech@signalwayantibody.com](mailto:tech@signalwayantibody.com)

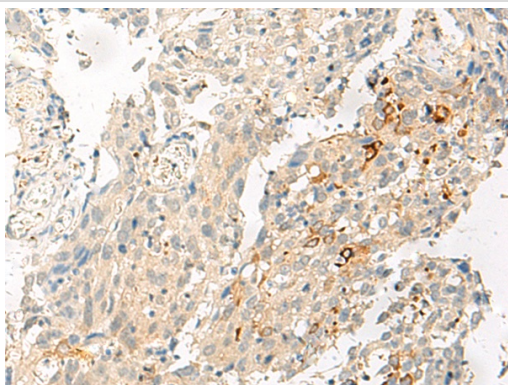
## Description

Product Name	ADGRG1 Antibody
Host Species	Rabbit
Clonality	Polyclonal
Purification	Antigen affinity purification
Applications	IHC
Species Reactivity	Hu
Specificity	The antibody detects endogenous levels of total ADGRG1 protein.
Immunogen Type	Peptide
Immunogen Description	Synthetic peptide of human ADGRG1
Target Name	ADGRG1
Other Names	BFPP; BPPR; GPR56; TM7LN4; TM7XN1
Accession No.	Swiss-Prot#:Q9Y653NCBI Gene ID:9289Gene Accssion:NP_005673
Uniprot	Q9Y653
GeneID	9289;
Concentration	0.5
Formulation	Rabbit IgG in pH7.4 PBS, 0.05% NaN <sub>3</sub> , 40% Glycerol.
Storage	Store at -20°C

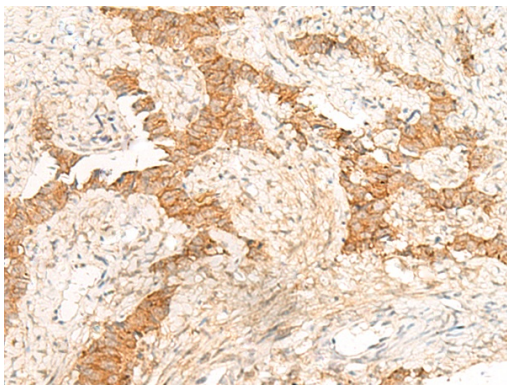
## Application Details

IHC dilution:1: 20-100

## Images



The image is immunohistochemistry of paraffin-embedded Human cervical cancer tissue using 47600(ADGRG1 Antibody) at dilution 1/20.(Original magnification: 200)



The image is immunohistochemistry of paraffin-embedded Human ovarian cancer tissue using 47600(ADGRG1 Antibody) at dilution 1/20.(Original magnification: 200)

## Background

This gene encodes a member of the G protein-coupled receptor family and regulates brain cortical patterning. The encoded protein binds specifically to transglutaminase 2, a component of tissue and tumor stroma implicated as an inhibitor of tumor progression. Mutations in this gene are associated with a brain malformation known as bilateral frontoparietal polymicrogyria. Alternative splicing results in multiple transcript variants.

Note: This product is for in vitro research use only