

GPR137 Antibody

Catalog No: #47602

Orders: order@signalwayantibody.comSupport: tech@signalwayantibody.com

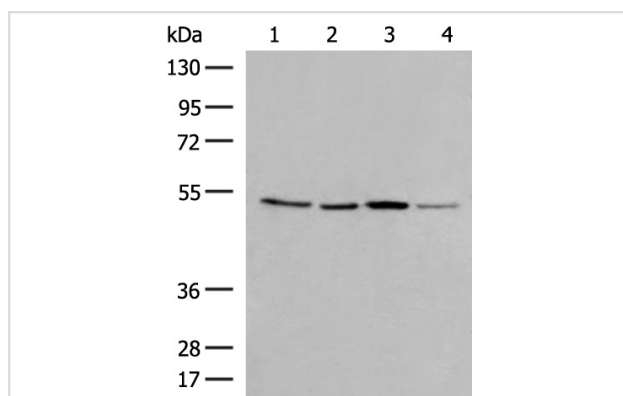
Description

Product Name	GPR137 Antibody
Host Species	Rabbit
Clonality	Polyclonal
Purification	Antigen affinity purification
Applications	WB
Species Reactivity	Hu, Ms
Specificity	The antibody detects endogenous levels of total GPR137 protein.
Immunogen Type	Peptide
Immunogen Description	Synthetic peptide of human GPR137
Target Name	GPR137
Other Names	C11orf4; GPR137A; TM7SF1L1
Accession No.	Swiss-Prot#:Q96N19NCBI Gene ID:56834Gene Accssion:NP_064540
Uniprot	Q96N19
GeneID	56834;
Calculated MW	46 kDa
Concentration	0.6
Formulation	Rabbit IgG in pH7.4 PBS, 0.05% NaN ₃ , 40% Glycerol.
Storage	Store at -20°C

Application Details

WB dilution:1:200-1000

Images



Gel: 8%SDS-PAGE, Lysate: 40 µg, Lane 1-4: TM4, PC3 and NIH/3T3 cell lysates, Human cerebrum tissue lysates, Primary antibody:47602(GPR137 Antibody) at dilution 1/250, Secondary antibody: Goat anti rabbit IgG at 1/8000 dilution, Exposure time: 2 minutes

Background

G protein-coupled receptors (GPRs) are highly related to oncogenesis and cancer metastasis. G protein-coupled receptor 137 (GPR137) was initially reported as a novel orphan GPR about 10 years ago. GPR137 is ubiquitously expressed in the central nervous system (CNS), mainly in the

hippocampus (PMID: 22025619). GPR137 is involved in the progression of human glioma, suggesting GPR137 as a potential oncogene of glioma cells (PMID: 24870220). Recent study shows that GPR137 plays an important role in colon cancer cell proliferation (PMID: 25301753).

Note: This product is for in vitro research use only