

ELP1 Antibody

Catalog No: #47649



Orders: [order@signalwayantibody.com](mailto:order@signalwayantibody.com)  
Support: [tech@signalwayantibody.com](mailto:tech@signalwayantibody.com)

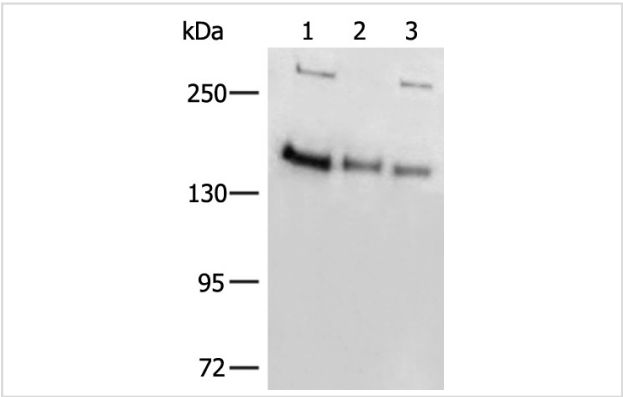
Description

Product Name	ELP1 Antibody
Host Species	Rabbit
Clonality	Polyclonal
Purification	Antigen affinity purification
Applications	WB, IHC
Species Reactivity	Hu
Specificity	The antibody detects endogenous levels of total ELP1 protein.
Immunogen Type	Peptide
Immunogen Description	Synthetic peptide of human ELP1
Target Name	ELP1
Other Names	FD; DYS; IKAP; IKI3; TOT1; IKBKAP
Accession No.	Swiss-Prot#:O95163NCBI Gene ID:8518Gene Accssion:NP_003631
Uniprot	O95163
GeneID	8518;
Calculated MW	150 kDa
Concentration	0.7
Formulation	Rabbit IgG in pH7.4 PBS, 0.05% NaN3, 40% Glycerol.
Storage	Store at -20°C

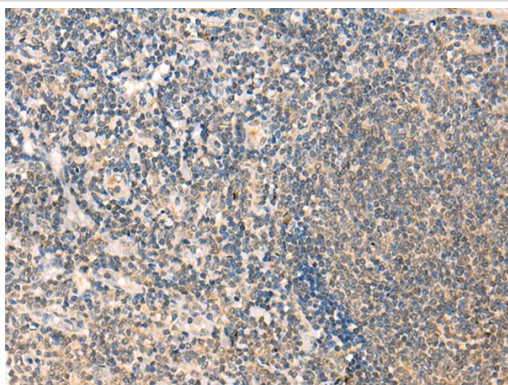
Application Details

WB dilution:1:200-1000
IHC dilution:1: 25-100

Images



Gel: 6%SDS-PAGE, Lysate: 40 µg, Lane 1-3: 231, K562 and A172 cell lysates, Primary antibody:47649(ELP1 Antibody) at dilution 1/200, Secondary antibody: Goat anti rabbit IgG at 1/8000 dilution, Exposure time: 1 minute



The image is immunohistochemistry of paraffin-embedded Human tonsil tissue using 47649(ELP1 Antibody) at dilution 1/25.(Original magnification: 200)

## Background

The protein encoded by this gene is a scaffold protein and a regulator for three different kinases involved in proinflammatory signaling. The encoded protein can bind NF-kappa-B-inducing kinase and I-kappa-B kinases through separate domains and assemble them into an active kinase complex. Mutations in this gene have been associated with familial dysautonomia. Alternative splicing results in multiple transcript variants encoding different isoforms.

Note: This product is for in vitro research use only