

GPC6 Antibody

Catalog No: #47752

Orders: order@signalwayantibody.comSupport: tech@signalwayantibody.com

Description

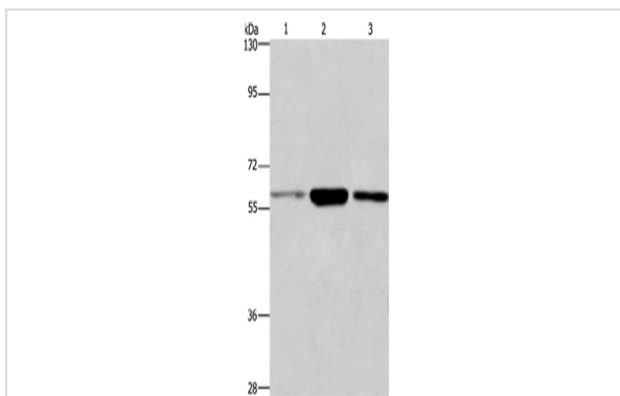
Product Name	GPC6 Antibody
Host Species	Rabbit
Clonality	Polyclonal
Purification	Antigen affinity purification
Applications	WB, IHC
Species Reactivity	Hu, Ms
Specificity	The antibody detects endogenous levels of total GPC6 protein.
Immunogen Type	Peptide
Immunogen Description	Synthetic peptide of human GPC6
Target Name	GPC6
Other Names	OMIMD1
Accession No.	Swiss-Prot#:Q9Y625NCBI Gene ID:10082Gene Accssion:NP_005699
Uniprot	Q9Y625
GeneID	10082;
Calculated MW	63 kDa
Concentration	0.9
Formulation	Rabbit IgG in pH7.4 PBS, 0.05% NaN ₃ , 40% Glycerol.
Storage	Store at -20°C

Application Details

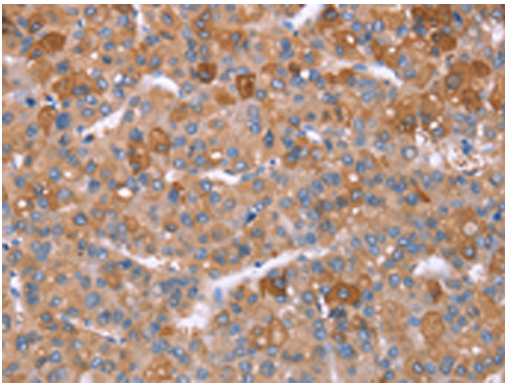
WB dilution:1:500-2000

IHC dilution:1: 50-200

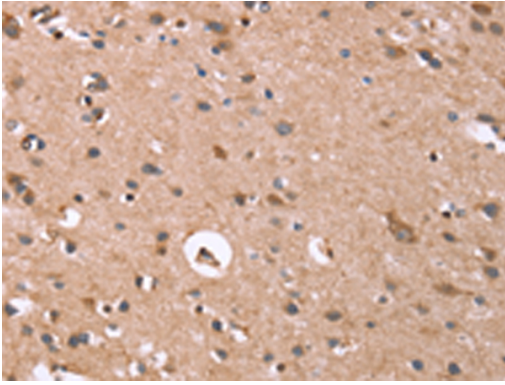
Images



Gel: 6%SDS-PAGE, Lysate: 40 µg, Lane 1-3: K562 cells, 231 cells, human fetal liver tissue, Primary antibody:47752(GPC6 Antibody) at dilution 1/750, Secondary antibody: Goat anti rabbit IgG at 1/8000 dilution, Exposure time: 1 minute



The image is immunohistochemistry of paraffin-embedded Human liver cancer tissue using 47752(GPC6 Antibody) at dilution 1/40.(Original magnification: 200)



The image is immunohistochemistry of paraffin-embedded Human brain tissue using 47752(GPC6 Antibody) at dilution 1/40.(Original magnification: 200)

Background

The glypicans comprise a family of glycosylphosphatidylinositol-anchored heparan sulfate proteoglycans, and they have been implicated in the control of cell growth and cell division. The glypican encoded by this gene is a putative cell surface coreceptor for growth factors, extracellular matrix proteins, proteases and anti-proteases.

Note: This product is for in vitro research use only