

KCNU1 Antibody

Catalog No: #47810

Orders: order@signalwayantibody.comSupport: tech@signalwayantibody.com

Description

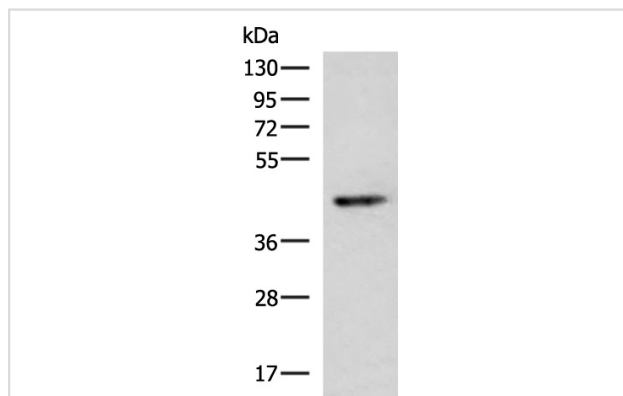
Product Name	KCNU1 Antibody
Host Species	Rabbit
Clonality	Polyclonal
Purification	Antigen affinity purification
Applications	WB, IHC
Species Reactivity	Hu
Specificity	The antibody detects endogenous levels of total KCNU1 protein.
Immunogen Type	Peptide
Immunogen Description	Synthetic peptide of human KCNU1
Target Name	KCNU1
Other Names	KCa5; Slo3; KCNMC1; KCa5.1; Kcnma3
Accession No.	Swiss-Prot#:A8MYU2NCBI Gene ID:157855Gene Accssion:NP_001027006
Uniprot	A8MYU2
GeneID	157855;
Calculated MW	130 kDa
Concentration	0.7
Formulation	Rabbit IgG in pH7.4 PBS, 0.05% NaN ₃ , 40% Glycerol.
Storage	Store at -20°C

Application Details

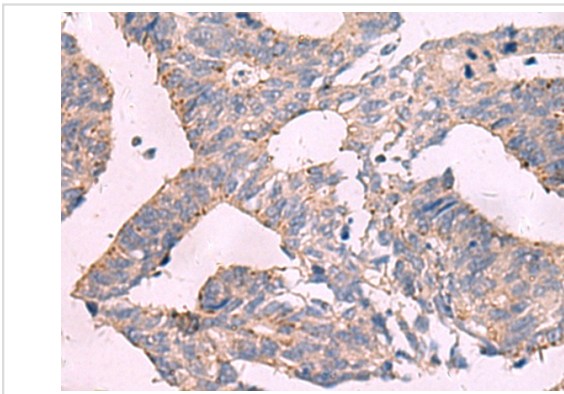
WB dilution:1:500-2000

IHC dilution:1: 25-100

Images



Gel: 6%SDS-PAGE, Lysate: 40 Ξ Og, Lane: Human fetal brain tissue lysate, Primary antibody:47810(KCNU1 Antibody) at dilution 1/600, Secondary antibody: Goat anti rabbit IgG at 1/5000 dilution, Exposure time: 1 minute



The image is immunohistochemistry of paraffin-embedded Human colorectal cancer tissue using 47810(KCNU1 Antibody) at dilution 1/25.(Original magnification: 200)

Background

This gene encodes a member of the potassium channel family of proteins. The encoded voltage-gated ion channel allows the outward flow of potassium ions during plasma membrane hyperpolarization in sperm. Opening of this channel may be regulated by calcium ion levels. Homozygous knockout mice that lack the related mouse gene exhibit male sterility. Alternative splicing results in multiple transcript variants.

Note: This product is for in vitro research use only