

CEP78 Antibody

Catalog No: #47817

Orders: order@signalwayantibody.comSupport: tech@signalwayantibody.com

Description

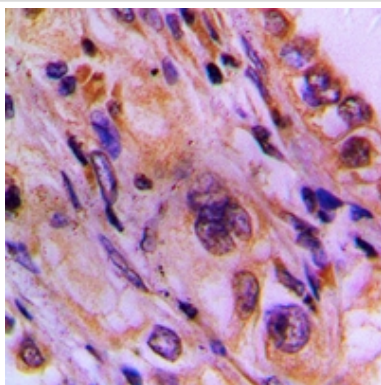
Product Name	CEP78 Antibody
Host Species	Rabbit
Clonality	Polyclonal
Purification	The antibody was purified by immunogen affinity chromatography.
Applications	WB IHC
Species Reactivity	Hu
Specificity	Recognizes endogenous levels of CEP78 protein.
Immunogen Description	KLH-conjugated synthetic peptide encompassing a sequence within the center region of human CEP78.
Target Name	CEP78
Other Names	C9orf81; Centrosomal protein of 78 kDa; Cep78
Accession No.	Swiss-Prot#:Q5JTW2NCBI Gene ID:84131
Uniprot	Q5JTW2
GeneID	84131;
Calculated MW	78KD
Concentration	1 mg/ml
Formulation	Rabbit IgG in phosphate buffered saline (without Mg ²⁺ and Ca ²⁺), pH 7.4, 150mM NaCl, 0.02% sodium azide and 50% glycerol.
Storage	Store at -20°C

Application Details

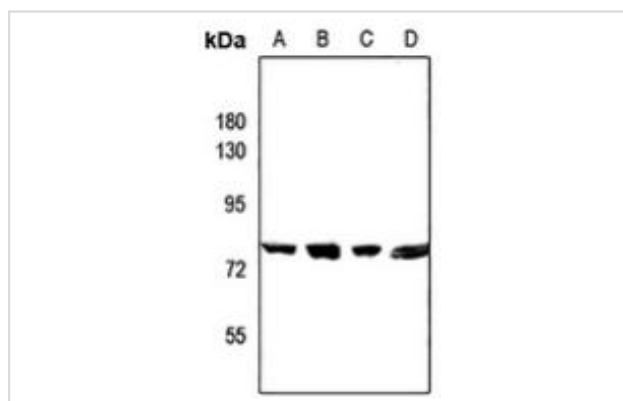
Western blotting:1:500 - 1:1000

Immunohistochemistry:1:50 - 1:100

Images



Immunohistochemical analysis of CEP78 staining in human lung cancer formalin fixed paraffin embedded tissue section. The section was then incubated with the antibody at room temperature and detected using an HRP conjugated compact polymer system. DAB was used as the chromogen. The section was then counterstained with haematoxylin and mounted with DPX.



Western blot analysis of CEP78 expression in COS7 (A), HEK293T (B), CT26 (C), H9C2 (D) whole cell lysates.

Note: This product is for in vitro research use only