

## MTIF3 Antibody

Catalog No: #47838

Orders: [order@signalwayantibody.com](mailto:order@signalwayantibody.com)Support: [tech@signalwayantibody.com](mailto:tech@signalwayantibody.com)

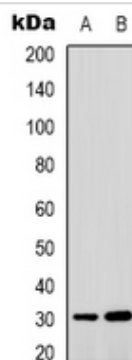
## Description

Product Name	MTIF3 Antibody
Host Species	Rabbit
Clonality	Polyclonal
Purification	The antibody was purified by immunogen affinity chromatography.
Applications	WB, IHC
Species Reactivity	HuO Rt
Specificity	Recognizes endogenous levels of MTIF3 protein.
Immunogen Description	KLH-conjugated synthetic peptide encompassing a sequence within the center region of human MTIF3.
Target Name	MTIF3
Other Names	Translation initiation factor IF-3, mitochondrial; IF-3(Mt); IF-3Mt; IF3(mt); IF3mt
Accession No.	Swiss-Prot#:Q9H2K0NCBI Gene ID:219402
Uniprot	Q9H2K0
GeneID	219402;
Calculated MW	32KD
Concentration	1 mg/ml
Formulation	Liquid in 0.42% Potassium phosphate, 0.87% Sodium chloride, pH 7.3, 30% glycerol, and 0.01% sodium azide.
Storage	Store at -20°C

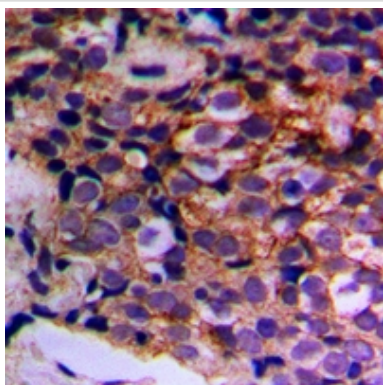
## Application Details

WB (1/500 - 1/1000), IHC (1/100 - 1/200)

## Images



Western blot analysis of MTIF3 expression in HCT116 (A), PC12 (B) whole cell lysates.



Immunohistochemical analysis of MTIF3 staining in human prostate cancer formalin fixed paraffin embedded tissue section. The section was then incubated with the antibody at room temperature and detected using an HRP conjugated compact polymer system. DAB was used as the chromogen. The section was then counterstained with haematoxylin and mounted with DPX.

---

Note: This product is for in vitro research use only