

PP15 Antibody

Catalog No: #47842

Orders: order@signalwayantibody.comSupport: tech@signalwayantibody.com

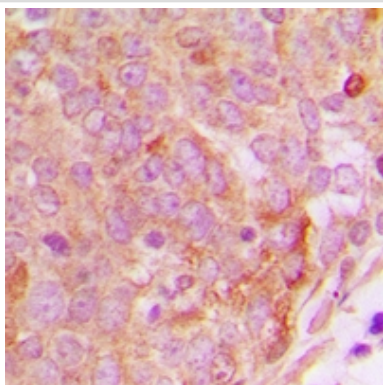
Description

Product Name	PP15 Antibody
Host Species	Rabbit
Clonality	Polyclonal
Purification	The antibody was purified by immunogen affinity chromatography.
Applications	WB, IHC
Species Reactivity	Hu, Ms, Rt
Specificity	Recognizes endogenous levels of PP15 protein.
Immunogen Description	KLH-conjugated synthetic peptide encompassing a sequence within the center region of human PP15.
Target Name	NUTF2
Other Names	NTF2; Nuclear transport factor 2; NTF-2; Placental protein 15; PP15
Accession No.	Swiss-Prot#:P61970NCBI Gene ID:10204
Uniprot	P61970
GeneID	10204;
Calculated MW	14,28,42KD
Concentration	1 mg/ml
Formulation	Liquid in 0.42% Potassium phosphate, 0.87% Sodium chloride, pH 7.3, 30% glycerol, and 0.01% sodium azide.
Storage	Store at -20°C

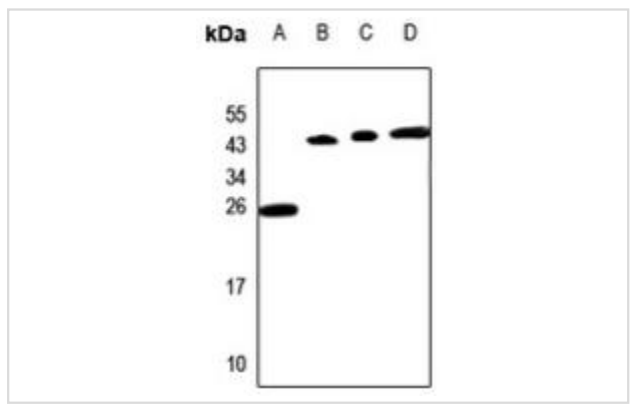
Application Details

WB (1/500 - 1/1000), IHC (1/100 - 1/200)

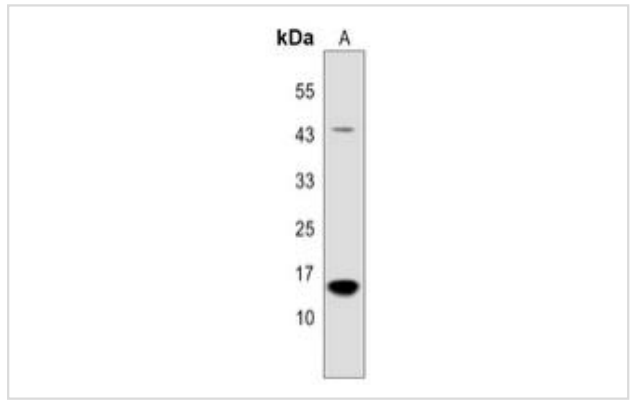
Images



Immunohistochemical analysis of PP15 staining in human breast cancer formalin fixed paraffin embedded tissue section. The section was then incubated with the antibody at room temperature and detected using an HRP conjugated compact polymer system. DAB was used as the chromogen. The section was then counterstained with haematoxylin and mounted with DPX.



Western blot analysis of PP15 expression in HepG2 (A), MCF7 (B), CT26 (C), C6 (D) whole cell lysates.



Western blot analysis of PP15 expression in MOLT4 (A) whole cell lysates.

Note: This product is for in vitro research use only