

GPR10 Antibody

Catalog No: #47848



Orders: order@signalwayantibody.com
Support: tech@signalwayantibody.com

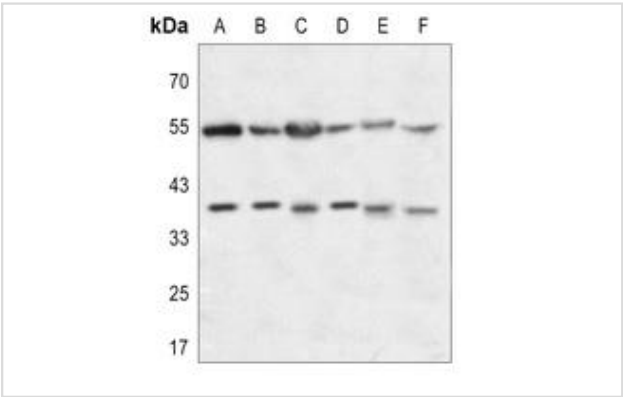
Description

| | |
|-----------------------|---|
| Product Name | GPR10 Antibody |
| Host Species | Rabbit |
| Clonality | Polyclonal |
| Purification | The antibody was purified by immunogen affinity chromatography. |
| Applications | WB |
| Species Reactivity | Hu,Ms,Rt |
| Specificity | Recognizes endogenous levels of GPR10 protein. |
| Immunogen Description | KLH-conjugated synthetic peptide encompassing a sequence within the center region of human GPR10. |
| Target Name | PRLHR |
| Other Names | GPR10; GR3; Prolactin-releasing peptide receptor; PrRP receptor; PrRPR; G-protein coupled receptor 10; hGR3 |
| Accession No. | Swiss-Prot#:P49683NCBI Gene ID:2834 |
| Uniprot | P49683 |
| GeneID | 2834; |
| Calculated MW | 41KD |
| Concentration | 1 mg/ml |
| Formulation | Liquid in 0.42% Potassium phosphate, 0.87% Sodium chloride, pH 7.3, 30% glycerol, and 0.01% sodium azide. |
| Storage | Store at -20°C |

Application Details

WB (1/500 - 1/1000)

Images



Western blot analysis of GPR10 expression in HEK293T (A), Hela (B), A2780 (C), mouse brain (D), mouse kidney (E), rat kidney (F) whole cell lysates

Note: This product is for in vitro research use only