

RPS27L Antibody

Catalog No: #47851

Orders: order@signalwayantibody.comSupport: tech@signalwayantibody.com

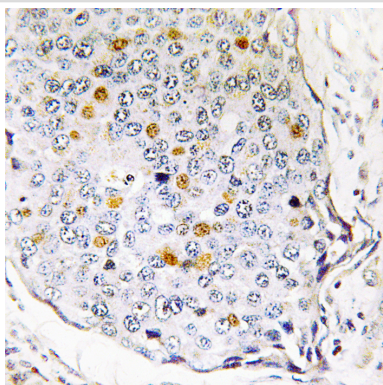
Description

Product Name	RPS27L Antibody
Host Species	Rabbit
Clonality	Polyclonal
Purification	The antibody was purified by immunogen affinity chromatography.
Applications	WB, IHC
Species Reactivity	Hu,Ms,Rt
Specificity	Recognizes endogenous levels of RPS27L protein.
Immunogen Description	KLH-conjugated synthetic peptide encompassing a sequence within the N-term region of human RPS27L.
Target Name	RPS27L
Other Names	40S ribosomal protein S27-like
Accession No.	Swiss-Prot#:Q71UM5NCBI Gene ID:51065
Uniprot	Q71UM5
GeneID	51065;
Calculated MW	15KD
Concentration	1 mg/ml
Formulation	Liquid in 0.42% Potassium phosphate, 0.87% Sodium chloride, pH 7.3, 30% glycerol, and 0.01% sodium azide.
Storage	Store at -20°C

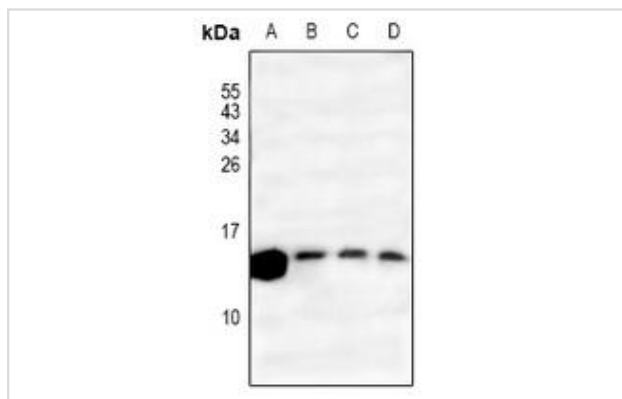
Application Details

WB (1/500 - 1/1000), IHC (1/50 - 1/200)

Images



Immunohistochemical analysis of RPS27L staining in human breast carcinoma formalin fixed paraffin embedded tissue section. The section was then incubated with the antibody at room temperature and detected using an HRP conjugated compact polymer system. DAB was used as the chromogen. The section was then counterstained with haematoxylin and mounted with DPX.



Western blot analysis of RPS27L expression in mouse kidney (A), rat kidney (B), A549 (C), H1792 (D) whole cell lysates.

Note: This product is for in vitro research use only