

SUPT16H Antibody

Catalog No: #47859

Orders: order@signalwayantibody.comSupport: tech@signalwayantibody.com

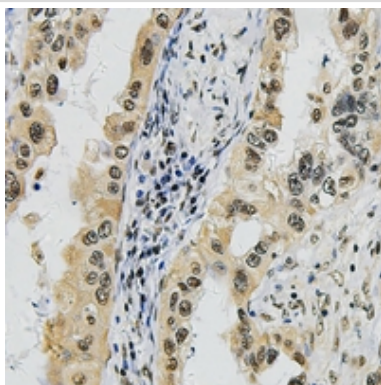
Description

Product Name	SUPT16H Antibody
Host Species	Rabbit
Clonality	Polyclonal
Purification	The antibody was purified by immunogen affinity chromatography.
Applications	WB, IHC
Species Reactivity	Hu,Ms,Rt
Specificity	Recognizes endogenous levels of SUPT16H protein.
Immunogen Description	KLH-conjugated synthetic peptide encompassing a sequence within the C-term region of human SUPT16H.
Target Name	SUPT16H
Other Names	FACT140; FACTP140; FACT complex subunit SPT16; Chromatin-specific transcription elongation factor 140 kDa subunit; FACT 140 kDa subunit; FACTp140; Facilitates chromatin transcription complex subunit SPT16; hSPT16
Accession No.	Swiss-Prot#:Q9Y5B9NCBI Gene ID:11198
Uniprot	Q9Y5B9
GeneID	11198;
Calculated MW	119KD
Concentration	1 mg/ml
Formulation	Liquid in 0.42% Potassium phosphate, 0.87% Sodium chloride, pH 7.3, 30% glycerol, and 0.01% sodium azide.
Storage	Store at -20°C

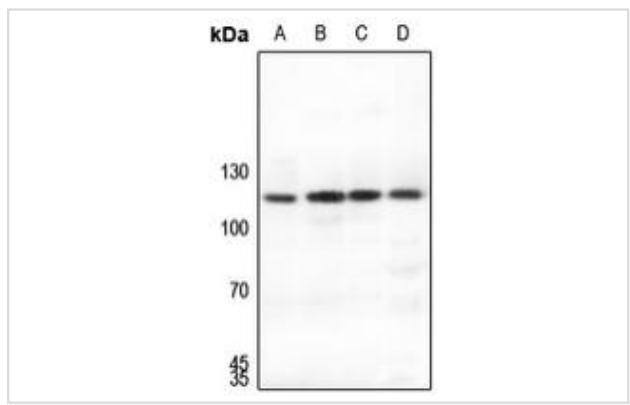
Application Details

WB (1/500 - 1/1000), IHC (1/100 - 1/200)

Images



Immunohistochemical analysis of SUPT16H staining in human lung cancer formalin fixed paraffin embedded tissue section. The section was then incubated with the antibody at room temperature and detected using an HRP conjugated compact polymer system. DAB was used as the chromogen. The section was then counterstained with haematoxylin and mounted with DPX.



Western blot analysis of SUPT16H expression in H446 (A), mouse lung (B), mouse kidney (C), rat lung (D) whole cell lysates.

Note: This product is for in vitro research use only