

## TEF Antibody

Catalog No: #47860

Orders: [order@signalwayantibody.com](mailto:order@signalwayantibody.com)Support: [tech@signalwayantibody.com](mailto:tech@signalwayantibody.com)

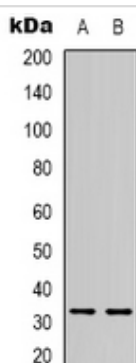
## Description

|                       |   |
|-----------------------|---|
| Product Name          | TEF Antibody  |
| Host Species          | Rabbit  |
| Clonality             | Polyclonal  |
| Purification          | The antibody was purified by immunogen affinity chromatography.   |
| Applications          | WB, IHC   |
| Species Reactivity    | Hu,Ms,Rt  |
| Specificity           | Recognizes endogenous levels of TEF protein.  |
| Immunogen Description | KLH-conjugated synthetic peptide encompassing a sequence within the C-term region of human TEF.           |
| Target Name           | TEF   |
| Other Names           | KIAA1655; Thyrotroph embryonic factor   |
| Accession No.         | Swiss-Prot#:Q10587NCBI Gene ID:7008   |
| Uniprot               | Q10587  |
| GeneID                | 7008;   |
| Calculated MW         | 33KD  |
| Concentration         | 1 mg/ml   |
| Formulation           | Liquid in 0.42% Potassium phosphate, 0.87% Sodium chloride, pH 7.3, 30% glycerol, and 0.01% sodium azide. |
| Storage               | Store at -20°C  |

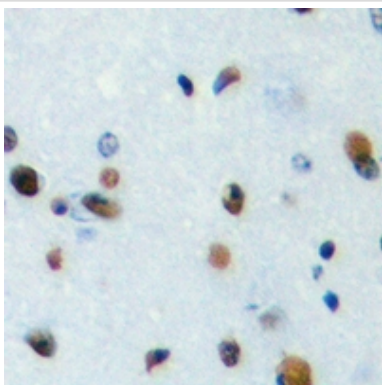
## Application Details

WB (1/500 - 1/1000), IHC (1/100 - 1/200)

## Images



Western blot analysis of TEF expression in mouse kidney (A), rat kidney (B) whole cell lysates



Immunohistochemical analysis of TEF staining in human brain formalin fixed paraffin embedded tissue section. The section was then incubated with the antibody at room temperature and detected using an HRP conjugated compact polymer system. DAB was used as the chromogen. The section was then counterstained with haematoxylin and mounted with DPX.

---

Note: This product is for in vitro research use only