

## Repo-Man Polyclonal Antibody

Catalog No: #41394

Package Size: #41394-1 50ul #41394-2 100ul

Orders: [order@signalwayantibody.com](mailto:order@signalwayantibody.com)Support: [tech@signalwayantibody.com](mailto:tech@signalwayantibody.com)

## Description

Product Name	Repo-Man Polyclonal Antibody
Host Species	Rabbit
Clonality	Polyclonal
Purification	The antibody was affinity-purified from rabbit antiserum by affinity-chromatography using epitope-specific immunogen.
Applications	WB IHC ELISA
Species Reactivity	Hu
Specificity	Repo-Man Polyclonal Antibody detects endogenous levels of Repo-Man protein.
Immunogen Type	peptide
Immunogen Description	Synthesized peptide derived from the Internal region of human Repo-Man.
Target Name	Repo-Man
Other Names	CDCA2; Cell division cycle-associated protein 2; Recruits PP1 onto mitotic chromatin at anaphase protein; Repo-Man
Accession No.	Swiss-Prot: Q69YH5NCBI Gene ID: 157313
Uniprot	Q69YH5
GeneID	157313;
SDS-PAGE MW	113kd
Concentration	1mg/ml
Formulation	Liquid in PBS containing 50% glycerol, 0.5% BSA and 0.02% sodium azide.
Storage	Store at -20°C/1 year

## Application Details

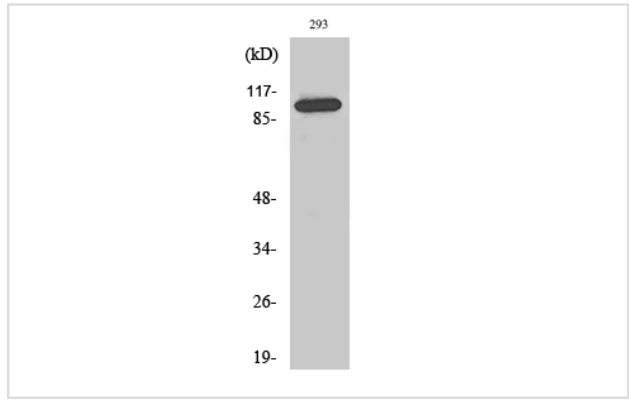
Western Blot: 1/500 - 1/2000.

Immunohistochemistry: 1/100 - 1/300.

ELISA: 1/5000.

Not yet tested in other applications.

## Images



Western Blot analysis of 293 cells using Repo-Man Polyclonal Antibody

Note: This product is for in vitro research use only