

HuB Antibody

Catalog No: #47882

Orders: order@signalwayantibody.comSupport: tech@signalwayantibody.com

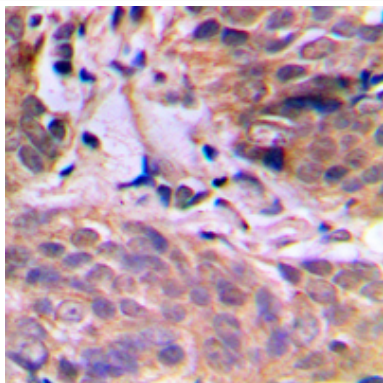
Description

Product Name	HuB Antibody
Host Species	Rabbit
Clonality	Polyclonal
Purification	The antibody was purified by immunogen affinity chromatography.
Applications	WB, IHC, IF/ICC
Species Reactivity	Hu,Ms,Rt
Specificity	Recognizes endogenous levels of HuB protein.
Immunogen Description	KLH-conjugated synthetic peptide encompassing a sequence within the center region of human HuB.
Target Name	ELAVL2; ELAVL4
Other Names	ELAVL2; HUB; ELAV-like protein 2; ELAV-like neuronal protein 1; Hu-antigen B; HuB; Nervous system-specific RNA-binding protein Hel-N1; ELAVL4; HUD; PNEM; ELAV-like protein 4; Hu-antigen D; HuD; Paraneoplastic encephalomyelitis antigen HuD
Accession No.	Swiss-Prot#:Q12926; P26378NCBI Gene ID:1993; 1996
Uniprot	Q12926
GeneID	1993;
Calculated MW	40KD
Concentration	1 mg/ml
Formulation	Liquid in 0.42% Potassium phosphate, 0.87% Sodium chloride, pH 7.3, 30% glycerol, and 0.01% sodium azide.
Storage	Store at -20°C

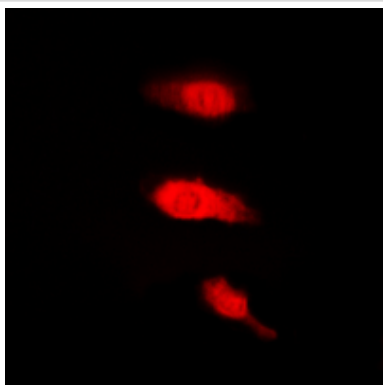
Application Details

WB (1/500 - 1/1000), IHC (1/100 - 1/200), IF/ICC (1/100 - 1/500)

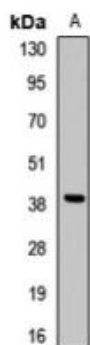
Images



Immunohistochemical analysis of HuB staining in human breast cancer formalin fixed paraffin embedded tissue section. The section was then incubated with the antibody at room temperature and detected using an HRP conjugated compact polymer system. DAB was used as the chromogen. The section was then counterstained with haematoxylin and mounted with DPX.



Immunofluorescent analysis of HuB staining in K562 cells. Formalin-fixed cells were permeabilized with 0.1% Triton X-100 in TBS for 5-10 minutes and blocked with 3% BSA-PBS for 30 minutes at room temperature. Cells were probed with the primary antibody in 3% BSA-PBS and incubated overnight at 4 C in a humidified chamber. Cells were washed with PBST and incubated with a DyLight 594-conjugated secondary antibody (red) in PBS at room temperature in the dark.



Western blot analysis of HuB expression in mouse cerebellum (A) whole cell lysates

Note: This product is for in vitro research use only