

POTEA Antibody

Catalog No: #47904

Orders: order@signalwayantibody.comSupport: tech@signalwayantibody.com

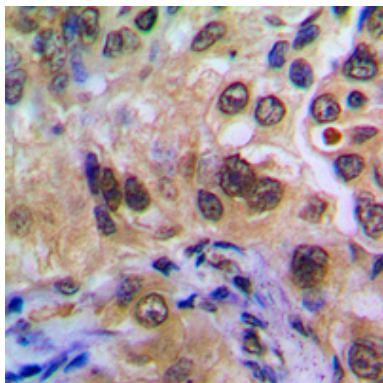
Description

Product Name	POTEA Antibody
Host Species	Rabbit
Clonality	Polyclonal
Purification	The antibody was purified by immunogen affinity chromatography.
Applications	WB, IHC
Species Reactivity	Hu, Ms, Rt
Specificity	Recognizes endogenous levels of POTEA protein.
Immunogen Description	KLH-conjugated synthetic peptide encompassing a sequence within the C-term region of human POTEA.
Target Name	POTEA
Other Names	A26A1; POTE8; POTE ankyrin domain family member A; ANKRD26-like family A member 1; Prostate, ovary, testis-expressed protein on chromosome 8; POTE-8
Accession No.	Swiss-Prot#:Q6S8J7NCBI Gene ID:340441
Uniprot	Q6S8J7
GeneID	340441;
Calculated MW	56KD
Concentration	1 mg/ml
Formulation	Liquid in 0.42% Potassium phosphate, 0.87% Sodium chloride, pH 7.3, 30% glycerol, and 0.01% sodium azide.
Storage	Store at -20°C

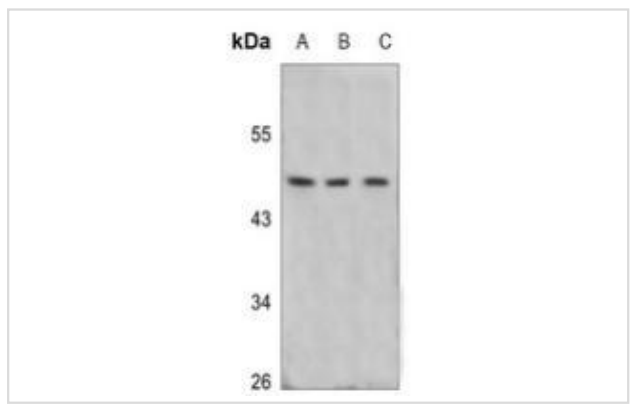
Application Details

WB (1/500 - 1/1000), IHC (1/100 - 1/200)

Images



Immunohistochemical analysis of POTEA staining in human breast cancer formalin fixed paraffin embedded tissue section. The section was then incubated with the antibody at room temperature and detected using an HRP conjugated compact polymer system. DAB was used as the chromogen. The section was then counterstained with haematoxylin and mounted with DPX.



Western blot analysis of POTE A expression in HEK293T (A), HepG2 (B), MCF7 (C) whole cell lysates

Note: This product is for in vitro research use only