

SLC6A16 Antibody

Catalog No: #47909

Orders: order@signalwayantibody.comSupport: tech@signalwayantibody.com

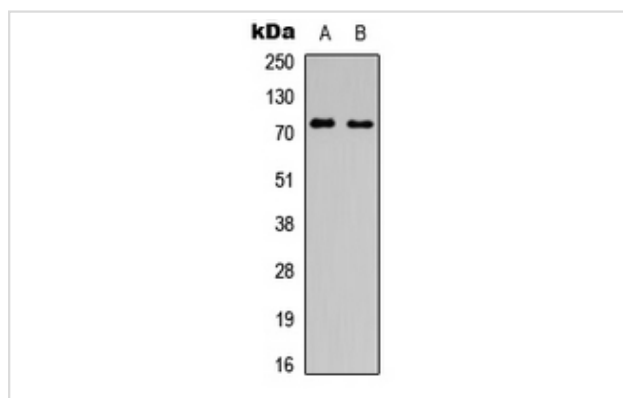
Description

Product Name	SLC6A16 Antibody
Host Species	Rabbit
Clonality	Polyclonal
Purification	The antibody was purified by immunogen affinity chromatography.
Applications	WB, IHC
Species Reactivity	Hu,Rt
Specificity	Recognizes endogenous levels of SLC6A16 protein.
Immunogen Description	KLH-conjugated synthetic peptide encompassing a sequence within the center region of human SLC6A16.
Target Name	SLC6A16
Other Names	NTT5; Orphan sodium- and chloride-dependent neurotransmitter transporter NTT5; Solute carrier family 6 member 16
Accession No.	Swiss-Prot#:Q9GZN6NCBI Gene ID:28968
Uniprot	Q9GZN6
GeneID	28968;
Calculated MW	82KD
Concentration	1 mg/ml
Formulation	Liquid in 0.42% Potassium phosphate, 0.87% Sodium chloride, pH 7.3, 30% glycerol, and 0.01% sodium azide.
Storage	Store at -20°C

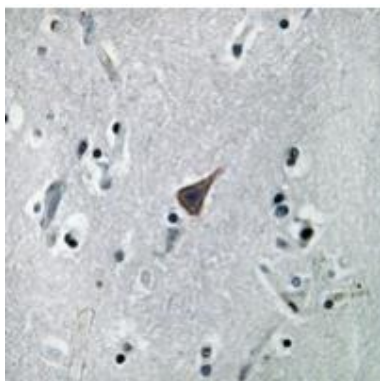
Application Details

WB (1/500 - 1/1000), IHC (1/50 - 1/100)

Images



Western blot analysis of SLC6A16 expression in HEK293T (A), H9C2 (B) whole cell lysates.



Immunohistochemical analysis of SLC6A16 staining in human brain formalin fixed paraffin embedded tissue section. The section was pre-treated using heat mediated antigen retrieval with sodium citrate buffer (pH 6.0). The section was then incubated with the antibody at room temperature and detected using an HRP conjugated compact polymer system. DAB was used as the chromogen. The section was then counterstained with haematoxylin and mounted with DPX.

Note: This product is for in vitro research use only