

SOX6 Antibody

Catalog No: #47910

Orders: order@signalwayantibody.comSupport: tech@signalwayantibody.com

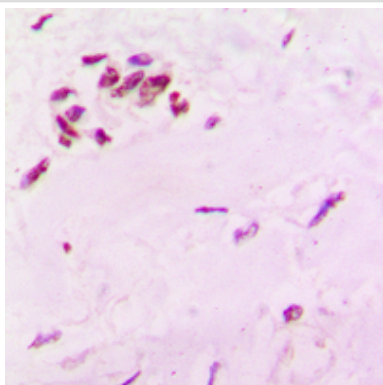
Description

Product Name	SOX6 Antibody
Host Species	Rabbit
Clonality	Polyclonal
Purification	The antibody was purified by immunogen affinity chromatography.
Applications	WB, IHC
Species Reactivity	Hu,Ms,Rt
Specificity	Recognizes endogenous levels of SOX6 protein.
Immunogen Description	KLH-conjugated synthetic peptide encompassing a sequence within the N-term region of human SOX6.
Target Name	SOX6
Other Names	Transcription factor SOX-6
Accession No.	Swiss-Prot#:P35712NCBI Gene ID:55553
Uniprot	P35712
GeneID	55553;
Calculated MW	91KD
Concentration	1 mg/ml
Formulation	Liquid in 0.42% Potassium phosphate, 0.87% Sodium chloride, pH 7.3, 30% glycerol, and 0.01% sodium azide.
Storage	Store at -20°C

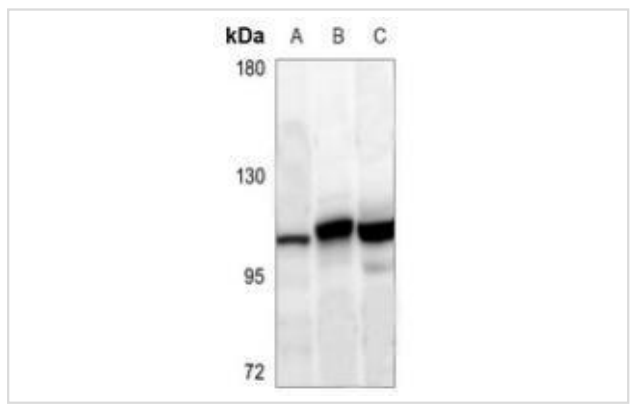
Application Details

WB (1/500 - 1/1000), IHC (1/100 - 1/200)

Images



Immunohistochemical analysis of SOX6 staining in human lung cancer formalin fixed paraffin embedded tissue section. The section was then incubated with the antibody at room temperature and detected using an HRP conjugated compact polymer system. DAB was used as the chromogen. The section was then counterstained with haematoxylin and mounted with DPX.



Western blot analysis of SOX6 expression in A549 (A), C6 (B), SP20 (C) whole cell lysates

Note: This product is for in vitro research use only