

Cadherin 7 Antibody

Catalog No: #47914

Orders: order@signalwayantibody.comSupport: tech@signalwayantibody.com

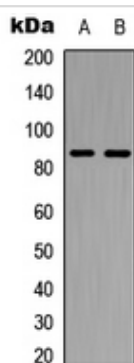
Description

Product Name	Cadherin 7 Antibody
Host Species	Rabbit
Clonality	Polyclonal
Purification	The antibody was purified by immunogen affinity chromatography.
Applications	WB, IHC, IF/ICC
Species Reactivity	Hu,Ms,Rt
Specificity	Recognizes endogenous levels of Cadherin 7 protein.
Immunogen Description	KLH-conjugated synthetic peptide encompassing a sequence within the C-term region of human Cadherin 7.
Target Name	CDH7
Other Names	CDH7L1; Cadherin-7
Accession No.	Swiss-Prot#:Q9ULB5NCBI Gene ID:1005
Uniprot	Q9ULB5
GeneID	1005;
Calculated MW	87KD
Concentration	1 mg/ml
Formulation	Liquid in 0.42% Potassium phosphate, 0.87% Sodium chloride, pH 7.3, 30% glycerol, and 0.01% sodium azide.
Storage	Store at -20°C

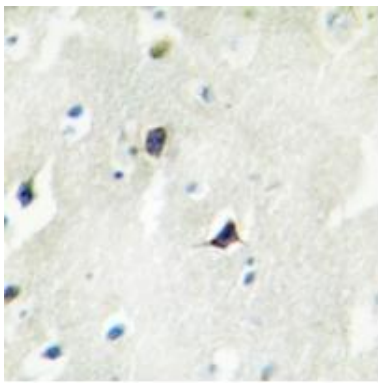
Application Details

WB (1/500 - 1/1000), IHC (1/50 - 1/100), IF/ICC (1/50 - 1/200)

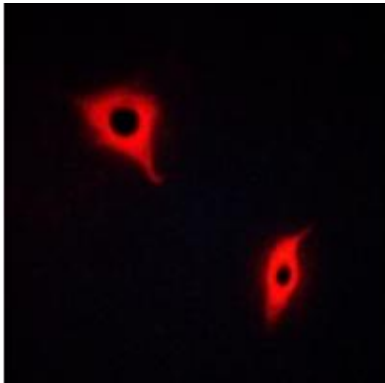
Images



Western blot analysis of Cadherin 7 expression in K562 (A), NIH3T3 (B) whole cell lysates.



Immunohistochemical analysis of Cadherin 7 staining in human brain formalin fixed paraffin embedded tissue section. The section was pre-treated using heat mediated antigen retrieval with sodium citrate buffer (pH 6.0). The section was then incubated with the antibody at room temperature and detected using an HRP conjugated compact polymer system. DAB was used as the chromogen. The section was then counterstained with haematoxylin and mounted with DPX



Immunofluorescent analysis of Cadherin 7 staining in A549 cells. Formalin-fixed cells were permeabilized with 0.1% Triton X-100 in TBS for 5-10 minutes and blocked with 3% BSA-PBS for 30 minutes at room temperature. Cells were probed with the primary antibody in 3% BSA-PBS and incubated overnight at 4 °C in a humidified chamber. Cells were washed with PBST and incubated with a AF594-conjugated secondary antibody (red) in PBS at room temperature in the dark.

Note: This product is for in vitro research use only