

# GPRC5A Antibody

Catalog No: #47926



Orders: [order@signalwayantibody.com](mailto:order@signalwayantibody.com)  
Support: [tech@signalwayantibody.com](mailto:tech@signalwayantibody.com)

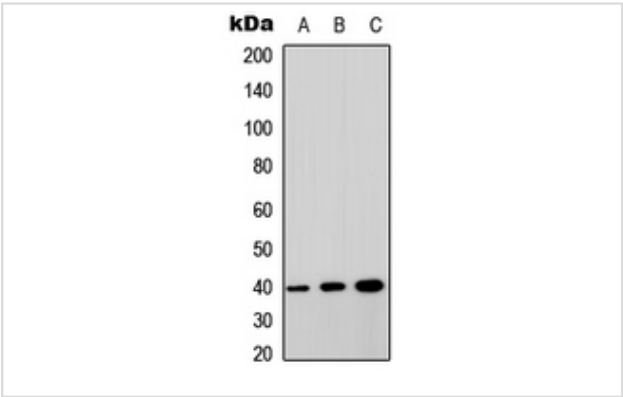
## Description

Product Name	GPRC5A Antibody
Host Species	Rabbit
Clonality	Polyclonal
Purification	The antibody was purified by immunogen affinity chromatography.
Applications	WB
Species Reactivity	Hu,Ms
Specificity	Recognizes endogenous levels of GPRC5A protein.
Immunogen Description	KLH-conjugated synthetic peptide encompassing a sequence within the center region of human GPRC5A.
Target Name	GPRC5A
Other Names	GPCR5A; RAI3; RAIG1; Retinoic acid-induced protein 3; G-protein coupled receptor family C group 5 member A; Orphan G-protein-coupling receptor PEIG-1; Retinoic acid-induced gene 1 protein; RAIG-1
Accession No.	Swiss-Prot#:Q8NFJ5NCBI Gene ID:9052
Uniprot	Q8NFJ5
GeneID	9052;
Calculated MW	40KD
Concentration	1 mg/ml
Formulation	Liquid in 0.42% Potassium phosphate, 0.87% Sodium chloride, pH 7.3, 30% glycerol, and 0.01% sodium azide.
Storage	Store at -20°C

## Application Details

WB (1/500 - 1/1000)

## Images



Western blot analysis of GPRC5A expression in MCF7 (A), HEK293T (B), NIH3T3 (C) whole cell lysates

Note: This product is for in vitro research use only