

## SAP49 Antibody

Catalog No: #47930

Orders: [order@signalwayantibody.com](mailto:order@signalwayantibody.com)Support: [tech@signalwayantibody.com](mailto:tech@signalwayantibody.com)

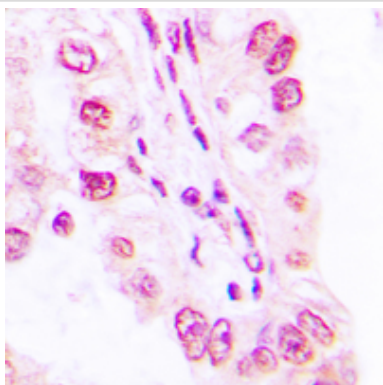
## Description

Product Name	SAP49 Antibody
Host Species	Rabbit
Clonality	Polyclonal
Purification	The antibody was purified by immunogen affinity chromatography.
Applications	WB, IHC
Species Reactivity	Hu,Ms,Rt
Specificity	Recognizes endogenous levels of SAP49 protein.
Immunogen Description	KLH-conjugated synthetic peptide encompassing a sequence within the center region of human SAP49.
Target Name	SF3B4
Other Names	SAP49; Splicing factor 3B subunit 4; Pre-mRNA-splicing factor SF3b 49 kDa subunit; SF3b50; Spliceosome-associated protein 49; SAP 49
Accession No.	Swiss-Prot#:Q15427NCBI Gene ID:10262
Uniprot	Q15427
GeneID	10262;
Calculated MW	49KD
Concentration	1 mg/ml
Formulation	Liquid in 0.42% Potassium phosphate, 0.87% Sodium chloride, pH 7.3, 30% glycerol, and 0.01% sodium azide.
Storage	Store at -20°C

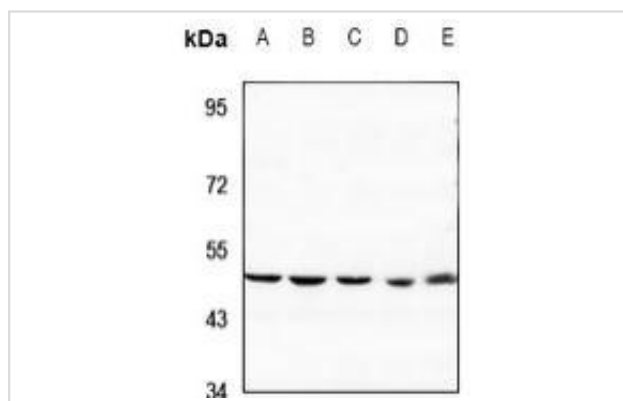
## Application Details

WB (1/500 - 1/1000), IHC (1/100 - 1/200)

## Images



Immunohistochemical analysis of SAP49 staining in human lung formalin fixed paraffin embedded tissue section. The section was then incubated with the antibody at room temperature and detected using an HRP conjugated compact polymer system. DAB was used as the chromogen. The section was then counterstained with haematoxylin and mounted with DPX.



Western blot analysis of SAP49 expression in LO2 (A), A549 (B), HEK293T (C), CT26 (D), PC12 (E) whole cell lysates.

Note: This product is for in vitro research use only