

SNAT2 Antibody

Catalog No: #47931



Orders: order@signalwayantibody.com
Support: tech@signalwayantibody.com

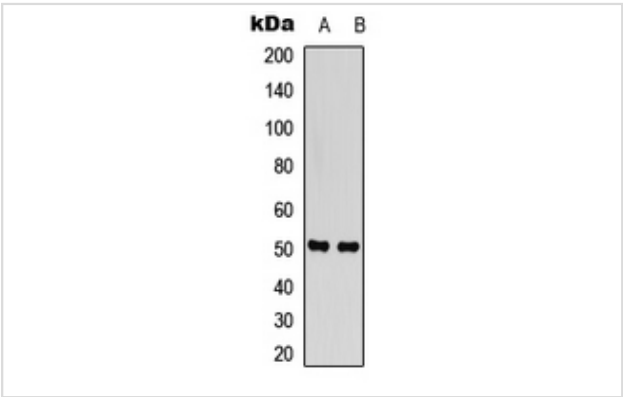
Description

Product Name	SNAT2 Antibody
Host Species	Rabbit
Clonality	Polyclonal
Purification	The antibody was purified by immunogen affinity chromatography.
Applications	WB
Species Reactivity	Hu
Specificity	Recognizes endogenous levels of SNAT2 protein.
Immunogen Description	KLH-conjugated synthetic peptide encompassing a sequence within the center region of human SNAT2.
Target Name	SLC38A2
Other Names	ATA2; KIAA1382; SAT2; SNAT2; Sodium-coupled neutral amino acid transporter 2; Amino acid transporter A2; Protein 40-9-1; Solute carrier family 38 member 2; System A amino acid transporter 2; System A transporter 1; System N amino acid transporter 2
Accession No.	Swiss-Prot#:Q96QD8NCBI Gene ID:54407
Uniprot	Q96QD8
GeneID	54407;
Calculated MW	50KD
Concentration	1 mg/ml
Formulation	Rabbit IgG in phosphate buffered saline (without Mg2+ and Ca2+), pH 7.4, 150mM NaCl, 0.02% sodium azide and 50% glycerol.
Storage	Store at -20°C

Application Details

Western blotting:1:500 - 1:1000

Images



Western blot analysis of Neuromedin U expression in HepG2, rat heart whole cell lysates.

Note: This product is for in vitro research use only