

## RB3 Antibody

Catalog No: #47932

Orders: [order@signalwayantibody.com](mailto:order@signalwayantibody.com)Support: [tech@signalwayantibody.com](mailto:tech@signalwayantibody.com)

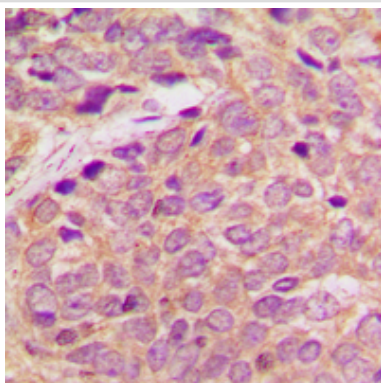
## Description

Product Name	RB3 Antibody
Host Species	Rabbit
Clonality	Polyclonal
Purification	The antibody was purified by immunogen affinity chromatography.
Applications	WB, IHC
Species Reactivity	Hu,Ms,Rt
Specificity	Recognizes endogenous levels of RB3 protein.
Immunogen Description	KLH-conjugated synthetic peptide encompassing a sequence within the C-term region of human RB3.
Target Name	STMN4
Other Names	Stathmin-4; Stathmin-like protein B3; RB3
Accession No.	Swiss-Prot#:Q9H169NCBI Gene ID:81551
Uniprot	Q9H169
GeneID	81551;
Calculated MW	22,25KD
Concentration	1 mg/ml
Formulation	Liquid in 0.42% Potassium phosphate, 0.87% Sodium chloride, pH 7.3, 30% glycerol, and 0.01% sodium azide.
Storage	Store at -20°C

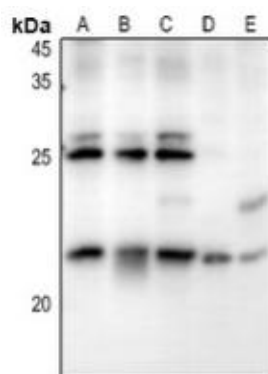
## Application Details

WB (1/500 - 1/1000), IHC (1/100 - 1/200)

## Images



Immunohistochemical analysis of RB3 staining in human breast cancer formalin fixed paraffin embedded tissue section. The section was then incubated with the antibody at room temperature and detected using an HRP conjugated compact polymer system. DAB was used as the chromogen. The section was then counterstained with haematoxylin and mounted with DPX.



Western blot analysis of RB3 expression in COS7 (A), MCF7 (B), A549 (C), CT26 (D), PC12 (E) whole cell lysates.

Note: This product is for in vitro research use only