

# CD296 Antibody

Catalog No: #47936



Orders: [order@signalwayantibody.com](mailto:order@signalwayantibody.com)  
Support: [tech@signalwayantibody.com](mailto:tech@signalwayantibody.com)

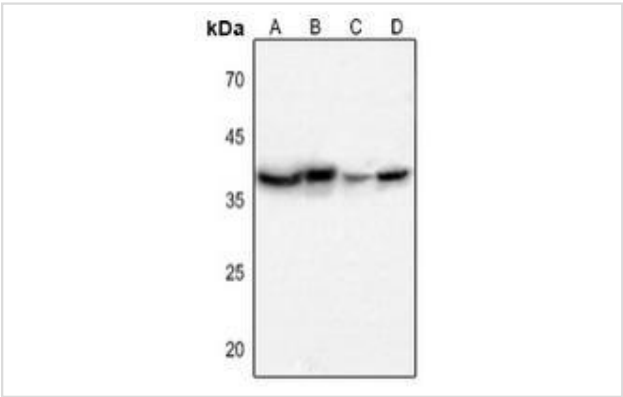
## Description

|                       |   |
|-----------------------|---|
| Product Name          | CD296 Antibody  |
| Host Species          | Rabbit  |
| Clonality             | Polyclonal  |
| Purification          | The antibody was purified by immunogen affinity chromatography.   |
| Applications          | WB, IHC   |
| Species Reactivity    | Hu,Ms,Rt  |
| Specificity           | Recognizes endogenous levels of CD296 protein.  |
| Immunogen Description | KLH-conjugated synthetic peptide encompassing a sequence within the center region of human CD296.   |
| Target Name           | ART1  |
| Other Names           | GPI-linked NAD(P)(+)-arginine ADP-ribosyltransferase 1; ADP-ribosyltransferase C2 and C3 toxin-like 1; ARTC1; Mono(ADP-ribosyl)transferase 1; CD296 |
| Accession No.         | Swiss-Prot#:P52961NCBI Gene ID:417  |
| Uniprot               | P52961  |
| GeneID                | 417;  |
| Calculated MW         | 36KD  |
| Concentration         | 1 mg/ml   |
| Formulation           | Liquid in 0.42% Potassium phosphate, 0.87% Sodium chloride, pH 7.3, 30% glycerol, and 0.01% sodium azide.   |
| Storage               | Store at -20°C  |

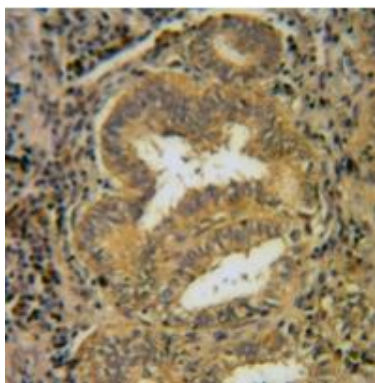
## Application Details

WB (1/500 - 1/1000), IHC (1/50 - 1/100)

## Images



Western blot analysis of CD296 expression in mouse muscle (A), mouse brain (B), rat muscle (C), rat brain (D) whole cell lysates



Immunohistochemical analysis of CD296 staining in human lung cancer formalin fixed paraffin embedded tissue section. The section was pre-treated using heat mediated antigen retrieval with sodium citrate buffer (pH 6.0). The section was then incubated with the antibody at room temperature and detected using an HRP conjugated compact polymer system. DAB was used as the chromogen. The section was then counterstained with haematoxylin and mounted with DPX.

---

Note: This product is for in vitro research use only