

CD26 Antibody

Catalog No: #47941

Orders: order@signalwayantibody.comSupport: tech@signalwayantibody.com

Description

| | |
|-----------------------|--|
| Product Name | CD26 Antibody |
| Host Species | Rabbit |
| Clonality | Polyclonal |
| Purification | The antibody was purified by immunogen affinity chromatography. |
| Applications | WB, IHC |
| Species Reactivity | Hu,Ms,Rt |
| Specificity | Recognizes endogenous levels of CD26 protein. |
| Immunogen Description | KLH-conjugated synthetic peptide encompassing a sequence within the center region of human CD26. |
| Target Name | DPP4 |
| Other Names | ADCP2; CD26; Dipeptidyl peptidase 4; ADABP; Adenosine deaminase complexing protein 2; ADCP-2; Dipeptidyl peptidase IV; DPP IV; T-cell activation antigen CD26; TP103; CD26 |
| Accession No. | Swiss-Prot#:P27487NCBI Gene ID:1803 |
| Uniprot | P27487 |
| GeneID | 1803; |
| Calculated MW | 88KD |
| Concentration | 1 mg/ml |
| Formulation | Liquid in 0.42% Potassium phosphate, 0.87% Sodium chloride, pH 7.3, 30% glycerol, and 0.01% sodium azide. |
| Storage | Store at -20°C |

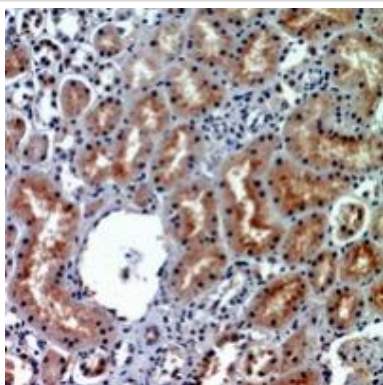
Application Details

WB (1/500 - 1/1000), IHC (1/50 - 1/100)

Images



Western blot analysis of CD26 expression in rat kidney (A) whole cell lysates.



Immunohistochemical analysis of CD26 staining in human kidney formalin fixed paraffin embedded tissue section. The section was pre-treated using heat mediated antigen retrieval with sodium citrate buffer (pH 6.0). The section was then incubated with the antibody at room temperature and detected using an HRP conjugated compact polymer system. DAB was used as the chromogen. The section was then counterstained with haematoxylin and mounted with DPX.

Note: This product is for in vitro research use only