

SRSF5 Antibody

Catalog No: #47949



Orders: [order@signalwayantibody.com](mailto:order@signalwayantibody.com)  
Support: [tech@signalwayantibody.com](mailto:tech@signalwayantibody.com)

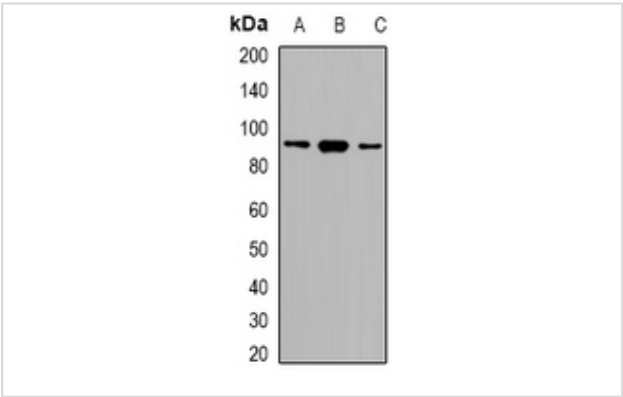
Description

|                       |   |
|-----------------------|---|
| Product Name          | SRSF5 Antibody  |
| Host Species          | Rabbit  |
| Clonality             | Polyclonal  |
| Purification          | The antibody was purified by immunogen affinity chromatography.   |
| Applications          | WB IHC IF   |
| Species Reactivity    | Hu,Ms,Rt  |
| Specificity           | Recognizes endogenous levels of SRSF5 protein.  |
| Immunogen Description | KLH-conjugated synthetic peptide encompassing a sequence within the center region of human SRSF5.   |
| Target Name           | SRSF5   |
| Other Names           | HRS; SFRS5; SRP40; Serine/arginine-rich splicing factor 5; Delayed-early protein HRS; Pre-mRNA-splicing factor SRP40; Splicing factor, arginine/serine-rich 5 |
| Accession No.         | Swiss-Prot#:Q13243NCBI Gene ID:6430   |
| Uniprot               | Q13243  |
| GeneID                | 6430;   |
| Calculated MW         | 31KD  |
| Concentration         | 1 mg/ml   |
| Formulation           | Rabbit IgG in phosphate buffered saline (without Mg2+ and Ca2+), pH 7.4, 150mM NaCl, 0.02% sodium azide and 50% glycerol.                                     |
| Storage               | Store at -20°C  |

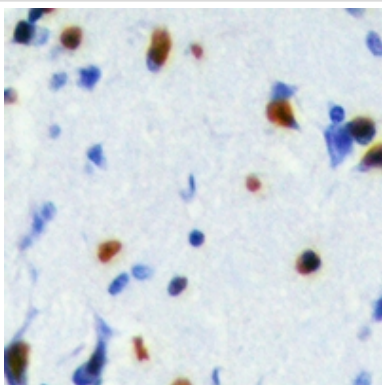
Application Details

Western blotting:1:500 - 1:1000Immunohistochemistry:1:50 - 1:100Immunofluorescence:1:100 - 1:300

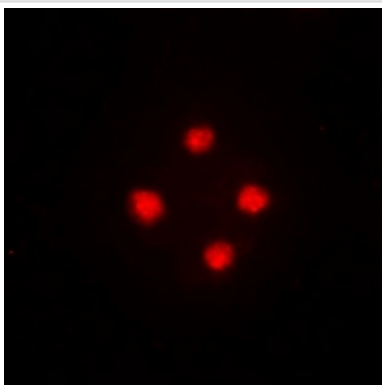
Images



Western blot analysis of Apolipoprotein O-Like expression in SHSY5Y, HEK293T, NIH3T3 whole cell lysates.



Immunohistochemical analysis of SRSF5 staining in human brain formalin fixed paraffin embedded tissue section. The section was then incubated with the antibody at room temperature and detected using an HRP conjugated compact polymer system. DAB was used as the chromogen. The section was then counterstained with haematoxylin and mounted with DPX.



Immunofluorescent analysis of SRSF5 staining in HeLa cells. Formalin-fixed cells were permeabilized with 0.1% Triton X-100 in TBS for 5-10 minutes and blocked with 3% BSA-PBS for 30 minutes at room temperature. Cells were probed with the primary antibody in 3% BSA-PBS and incubated overnight at 4 C in a humidified chamber. Cells were washed with PBST and incubated with a DyLight 594-conjugated secondary antibody (red) in PBS at room temperature in the dark.

---

Note: This product is for in vitro research use only