

Trypsin 2 Antibody

Catalog No: #47964

Orders: order@signalwayantibody.comSupport: tech@signalwayantibody.com

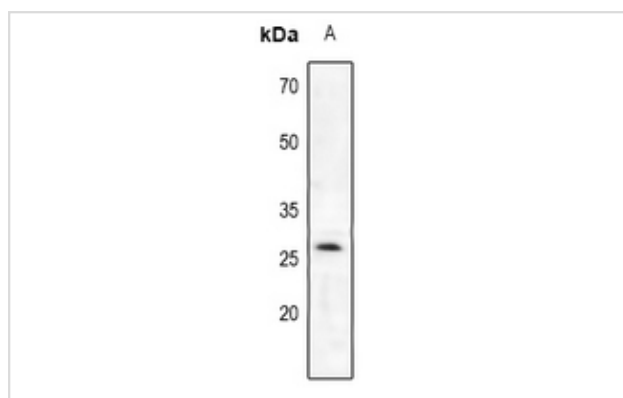
Description

Product Name	Trypsin 2 Antibody
Host Species	Rabbit
Clonality	Polyclonal
Purification	The antibody was purified by immunogen affinity chromatography.
Applications	WB
Species Reactivity	Hu,Ms,Rt
Specificity	Recognizes endogenous levels of Trypsin 2 protein.
Immunogen Description	KLH-conjugated synthetic peptide encompassing a sequence within the center region of human Trypsin 2.
Target Name	PRSS2
Other Names	TRY2; TRYP2; Trypsin-2; Anionic trypsinogen; Serine protease 2; Trypsin II
Accession No.	Swiss-Prot#:P07478NCBI Gene ID:5645
Uniprot	P07478
GeneID	5645;
Calculated MW	26KD
Concentration	1 mg/ml
Formulation	Liquid in 0.42% Potassium phosphate, 0.87% Sodium chloride, pH 7.3, 30% glycerol, and 0.01% sodium azide.
Storage	Store at -20°C

Application Details

WB (1/500 - 1/1000)

Images



Western blot analysis of Trypsin 2 expression in HT102 (A), SW620 (B), CT26 (C), PC12 (D) whole cell lysates

Note: This product is for in vitro research use only