

GPR115 Antibody

Catalog No: #47967



Orders: order@signalwayantibody.com
Support: tech@signalwayantibody.com

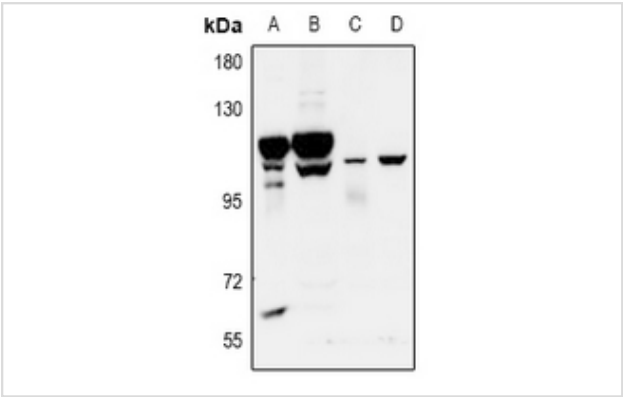
Description

Product Name	GPR115 Antibody
Host Species	Rabbit
Clonality	Polyclonal
Purification	The antibody was purified by immunogen affinity chromatography.
Applications	WB, IF/ICC
Species Reactivity	Hu,Ms,Rt
Specificity	Recognizes endogenous levels of GPR115 protein.
Immunogen Description	KLH-conjugated synthetic peptide encompassing a sequence within the C-term region of human GPR115.
Target Name	GPR115
Other Names	PGR18; Probable G-protein coupled receptor 115; G-protein coupled receptor PGR18
Accession No.	Swiss-Prot#:Q8IZF3NCBI Gene ID:221393
Uniprot	Q8IZF3
GeneID	221393;
Calculated MW	110KD
Concentration	1 mg/ml
Formulation	Liquid in 0.42% Potassium phosphate, 0.87% Sodium chloride, pH 7.3, 30% glycerol, and 0.01% sodium azide.
Storage	Store at -20°C

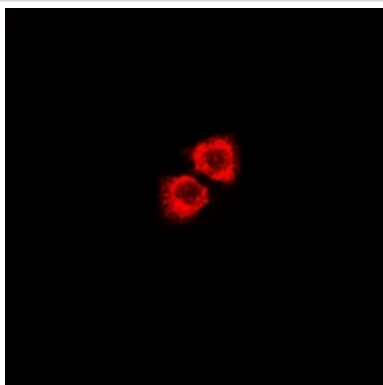
Application Details

WB (1/500 - 1/1000), IF/ICC (1/100 - 1/500)

Images



Western blot analysis of GPR115 expression in BV2 (A), PC12 (B), A549 (C), HepG2 (D) whole cell lysates.



Immunofluorescent analysis of GPR115 staining in LOVO cells. Formalin-fixed cells were permeabilized with 0.1% Triton X-100 in TBS for 5-10 minutes and blocked with 3% BSA-PBS for 30 minutes at room temperature. Cells were probed with the primary antibody in 3% BSA-PBS and incubated overnight at 4 C in a humidified chamber. Cells were washed with PBST and incubated with Alexa Fluor 647-conjugated secondary antibody (red) in PBS at room temperature in the dark.

Note: This product is for in vitro research use only