

## SIX1 Antibody

Catalog No: #47976

Orders: [order@signalwayantibody.com](mailto:order@signalwayantibody.com)Support: [tech@signalwayantibody.com](mailto:tech@signalwayantibody.com)

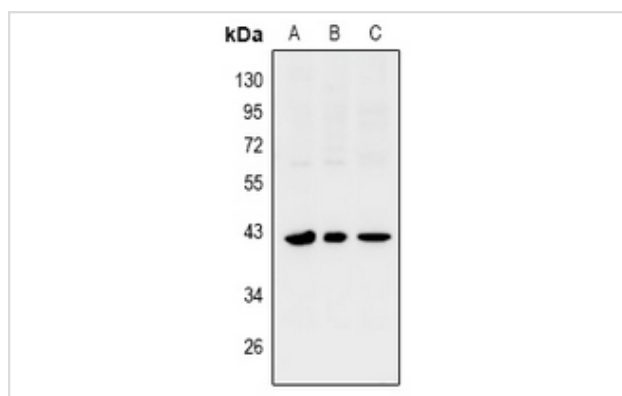
## Description

Product Name	SIX1 Antibody
Host Species	Rabbit
Clonality	Polyclonal
Purification	The antibody was purified by immunogen affinity chromatography.
Applications	WB
Species Reactivity	Hu,Ms,Rt
Specificity	Recognizes endogenous levels of SIX1 protein.
Immunogen Description	KLH-conjugated synthetic peptide encompassing a sequence within the center region of human SIX1.
Target Name	SIX1
Other Names	Homeobox protein SIX1; Sine oculis homeobox homolog 1
Accession No.	Swiss-Prot#:Q15475NCBI Gene ID:6495
Uniprot	Q15475
GeneID	6495;
Calculated MW	43KD
Concentration	1 mg/ml
Formulation	Liquid in 0.42% Potassium phosphate, 0.87% Sodium chloride, pH 7.3, 30% glycerol, and 0.01% sodium azide.
Storage	Store at -20°C

## Application Details

WB (1/500 - 1/1000)

## Images



Western blot analysis of SIX1 expression in PC12 (A), MEF (B), COS7 (C) whole cell lysates

Note: This product is for in vitro research use only