

Beta-2 Microglobulin Antibody

Catalog No: #48016



Package Size: #48016-1 50ul #48016-2 100ul

Orders: order@signalwayantibody.com
Support: tech@signalwayantibody.com

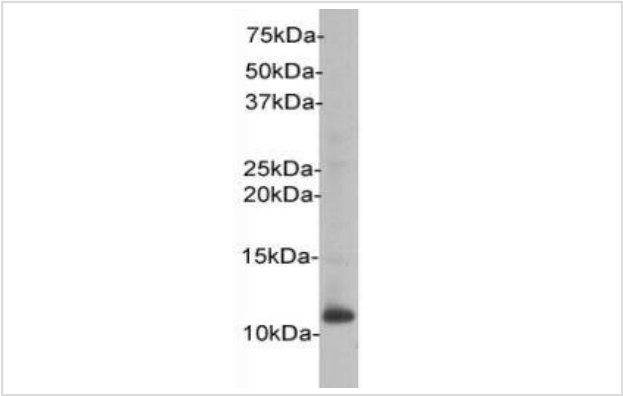
Description

Product Name	Beta-2 Microglobulin Antibody
Host Species	Rabbit
Clonality	Polyclonal
Purification	Immunogen affinity purified
Applications	WB, IHC, FC
Species Reactivity	Hu
Immunogen Description	peptide
Other Names	B2M antibody B2MG_HUMAN antibody Beta 2 microglobin antibody Beta 2 microglobulin antibody Beta 2 microglobulin precursor antibody Beta chain of mhc class 1 proteins antibody Beta chain of MHC class I molecules antibody Beta-2-microglobulin form pI 5.3 antibody CDABP0092 antibody Hdcma22p antibody
Accession No.	Swiss-Prot#:P61769
Uniprot	P61769
GeneID	567;
Calculated MW	13kDa
Formulation	1*TBS (pH7.4), 1%BSA, 40%Glycerol. Preservative: 0.05% Sodium Azide.
Storage	Store at -20°C

Application Details

WB: 1:500

Images



Western blot analysis on HL-60 using anti-Beta-2 Microglobulin polyclonal antibody.

Background

β 2 microglobulin also known as B2M is a component of MHC class I molecules, which are present on almost all cells of the body. β -2-Microglobulin associates with the α heavy chain of MHC and forms an immunoglobulin domain-like structure that mediates proper folding and expression of MHC class 1 molecules. Defects in B2M are the cause of hypercatabolic hypoproteinemia. Affected individuals show marked reduction in serum

concentrations of immunoglobulin and albumin, probably due to rapid degradation.

References

Note: This product is for in vitro research use only