

# Complement C3β- chain Antibody

Catalog No: #48060



Package Size: #48060-1 50ul #48060-2 100ul

Orders: [order@signalwayantibody.com](mailto:order@signalwayantibody.com)  
Support: [tech@signalwayantibody.com](mailto:tech@signalwayantibody.com)

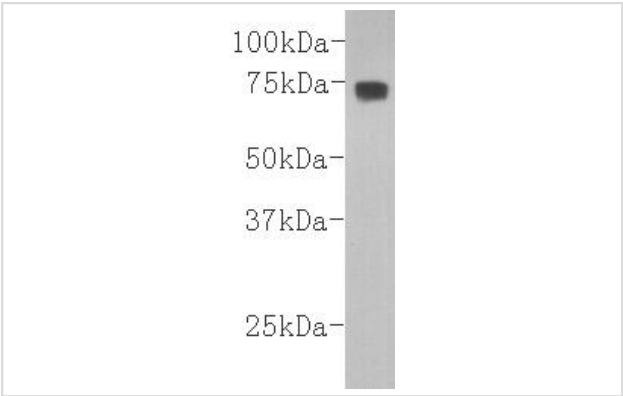
## Description

Product Name	Complement C3β- chain Antibody
Host Species	Mouse
Clonality	Monoclonal
Clone No.	1110
Purification	ProA affinity purified
Applications	WB, ICC, FC
Species Reactivity	Hu
Immunogen Description	peptide
Other Names	Acylation-stimulating protein cleavage product antibody AHUS5 antibody ARMD9 antibody ASP antibody C3 and PZP-like alpha-2-macroglobulin domain-containing protein 1 antibody C3 antibody CO3_HUMAN antibody Complement C3 antibody Complement C3 beta chain antibody Complement C3c alpha' chain fragment 2 antibody Complement component 3 antibody Complement component C3 antibody Complement factor 3 antibody CPAMD1 antibody Plp antibody
Accession No.	Swiss-Prot#:P01024
Uniprot	P01024
GeneID	718;
Calculated MW	70kDa
Formulation	1*TBS (pH7.4), 1%BSA, 40%Glycerol. Preservative: 0.05% Sodium Azide.
Storage	Store at -20°C

## Application Details

WB: 1:2,000

## Images



Western blot analysis on human plasma lysates using anti-C3(β-chain) Mouse mAb (Cat. # M0809-14).

## Background

---

Human Complement C3 (C3) is synthesized as a single-chain pro-molecule (185 kDa) that suffers several posttranslational modifications. Before being a mature protein, C3 is split into beta-chain (70 kDa) and alpha chain (115 kDa) and forms a rare internal thioester bond. C3 plays a central role in the activation of the complement system. Its processing by C3 convertase is the central reaction in both classical and alternative complement pathways. After activation C3b can bind covalently, via its reactive thioester, to cell surface carbohydrates or immune aggregates.

## References

---

---

Note: This product is for in vitro research use only