

Human IgG kapa light chain Antibody

Catalog No: #48064

Package Size: #48064-1 50ul #48064-2 100ul

Orders: order@signalwayantibody.comSupport: tech@signalwayantibody.com

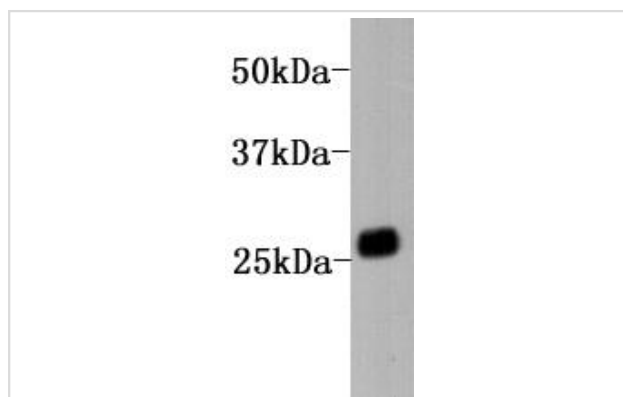
Description

Product Name	Human IgG kapa light chain Antibody
Host Species	Mouse
Clonality	Monoclonal
Purification	Affinity purified
Applications	WB
Species Reactivity	Hu
Immunogen Description	Human IgG
Accession No.	Swiss-Prot#:
Calculated MW	25 kDa
Formulation	1*TBS (pH7.4), 0.5%BSA, 40%Glycerol. Preservative: 0.05% Sodium Azide.
Storage	Store at -20°C

Application Details

WB: 1:2,000-1:5,000

Images



Western blot analysis on huamn IgG using anti-human kappa light chain antibody.

Background

IgG is the most abundant immunoglobulin and is approximately equally distributed in blood and in tissue liquids, constituting 75% of serum immunoglobulins in humans. There are 4 subclasses: IgG1 (66%), IgG2 (23%), IgG3 (7%) and IgG4 (4%). This is the only isotype that can pass through the human placenta, thereby providing protection to the fetus in its first weeks of life before its own immune system has developed. This antibody reacts with kappa-light-chain of human IgG.

References

Note: This product is for in vitro research use only