

RRP22 Polyclonal Antibody

Catalog No: #41416

Package Size: #41416-1 50ul #41416-2 100ul

Orders: order@signalwayantibody.comSupport: tech@signalwayantibody.com

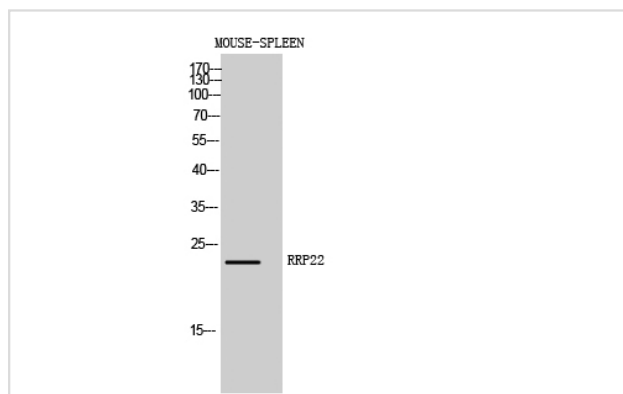
Description

Product Name	RRP22 Polyclonal Antibody
Host Species	Rabbit
Clonality	Polyclonal
Purification	The antibody was affinity-purified from rabbit antiserum by affinity-chromatography using epitope-specific immunogen.
Applications	WB
Species Reactivity	Hu Ms
Specificity	RRP22 Polyclonal Antibody detects endogenous levels of RRP22 protein.
Immunogen Type	peptide
Immunogen Description	Synthesized peptide derived from the Internal region of human RRP22.
Target Name	RRP22
Other Names	RASL10A; RRP22; Ras-like protein family member 10A; Ras-like protein RRP22; Ras-related protein on chromosome 22
Accession No.	Swiss-Prot: Q92737NCBI Gene ID: 10633
Uniprot	Q92737
GeneID	10633;
SDS-PAGE MW	30kd
Concentration	1mg/ml
Formulation	Liquid in PBS containing 50% glycerol, 0.5% BSA and 0.02% sodium azide.
Storage	Store at -20°C/1 year

Application Details

Western Blot: 1/500 - 1/2000.

Images



Western Blot analysis of MOUSE-SPLEEN cells using RRP22 Polyclonal Antibody

Note: This product is for in vitro research use only