

ODC antibody

Catalog No: #22664

Orders: order@signalwayantibody.comSupport: tech@signalwayantibody.com

Description

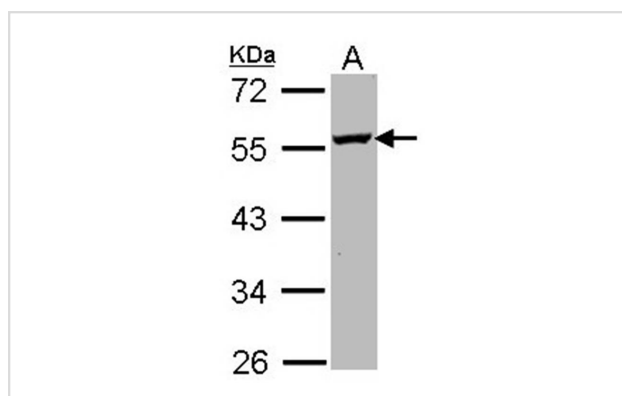
Product Name	ODC antibody
Host Species	Rabbit
Clonality	Polyclonal
Purification	Purified by antigen-affinity chromatography.
Applications	WB
Species Reactivity	Hu
Immunogen Type	Recombinant protein
Immunogen Description	Recombinant protein fragment contain a sequence corresponding to a region within amino acids 180 and 433 of human ODC1
Target Name	ODC
Accession No.	Swiss-Prot:P11926Gene ID:4953
Uniprot	P11926
GeneID	4953;
Concentration	0.7mg/ml
Formulation	Supplied in 0.1M Tris-buffered saline with 10% Glycerol (pH7.0). 0.01% Thimerosal was added as a preservative.
Storage	Store at -20°C for long term preservation (recommended). Store at 4°C for short term use.

Application Details

Predicted MW: 51kd

Western blotting: 1:500-1:3000

Images



Sample (30 ug of whole cell lysate)

A: Molt-4

10% SDS PAGE

Primary antibody diluted at 1: 1000

Background

This gene encodes the rate-limiting enzyme of the polyamine biosynthesis pathway which catalyzes ornithine to putrescine. The activity level for the enzyme varies in response to growth-promoting stimuli and exhibits a high turnover rate in comparison to other mammalian proteins. Originally

localized to both chromosomes 2 and 7, the gene encoding this enzyme has been determined to be located on 2p25, with a pseudogene located on 7q31-qter. [provided by RefSeq]

Note: This product is for in vitro research use only