

## Shiga toxin subunit B Antibody

Catalog No: #48147

Package Size: #48147-1 50ul #48147-2 100ul

Orders: [order@signalwayantibody.com](mailto:order@signalwayantibody.com)Support: [tech@signalwayantibody.com](mailto:tech@signalwayantibody.com)

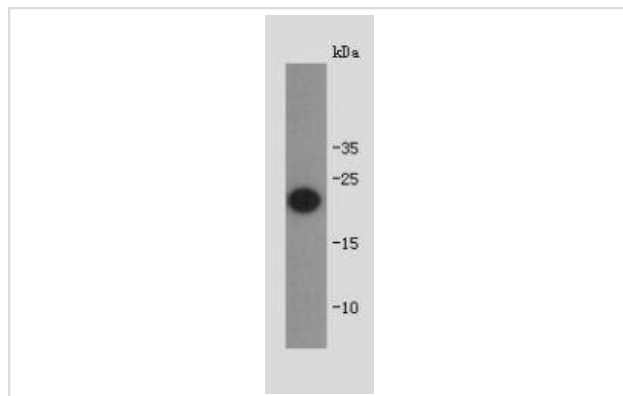
## Description

Product Name	Shiga toxin subunit B Antibody
Host Species	Rabbit
Clonality	Polyclonal
Purification	Immunogen affinity purified
Applications	WB
Immunogen Description	recombinant protein
Accession No.	Swiss-Prot#:Q7BQ98
Uniprot	Q7BQ98
Calculated MW	8kDa
Formulation	1*TBS (pH7.4), 1%BSA, 40%Glycerol. Preservative: 0.05% Sodium Azide.
Storage	Store at -20°C

## Application Details

WB: 1:2,000-1:5,000

## Images



Western blot analysis on full length recombinant protein of shiga toxin subunit B using polyclonal antibody.

## Background

Shiga toxins are a family of related toxins with two major groups, Stx1 and Stx2, whose genes are considered to be part of the genome of lambdoid prophages. Shiga toxin contains a single subunit A and five copies of subunit B. The B subunit is responsible for the binding of the holotoxin to specific receptors on the target cell surface, such as globotriaosylceramide (Gb3) in human intestinal microvilli.

## References

---

Note: This product is for in vitro research use only