

HSV Tag Antibody

Catalog No: #48196

Package Size: #48196-1 50ul #48196-2 100ul

Orders: order@signalwayantibody.comSupport: tech@signalwayantibody.com

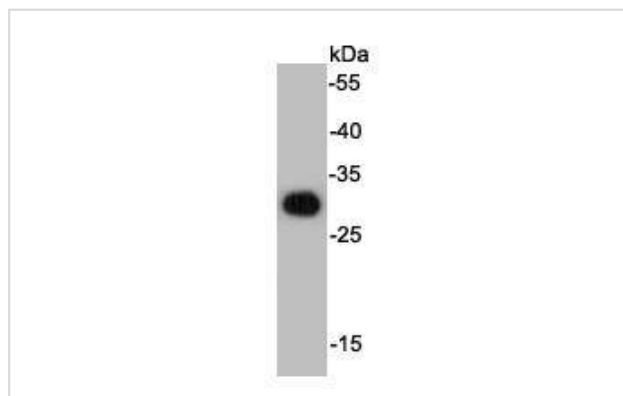
Description

Product Name	HSV Tag Antibody
Host Species	Rabbit
Clonality	Polyclonal
Purification	Immunogen affinity purified
Applications	WB
Immunogen Description	peptide
Other Names	HSV epitope tag antibody QPELAPEDPED tag antibody
Accession No.	Swiss-Prot#:
Formulation	1*TBS (pH7.4), 0.5%BSA, 40%Glycerol. Preservative: 0.05% Sodium Azide.
Storage	Store at -20°C

Application Details

WB: 1:5,000

Images



Western blot analysis on HSV tagged fusion protein.

Background

Epitope tags are useful for the labeling and detection of proteins using immunoblotting, immunoprecipitation, and immunostaining techniques. Because of their small size, they are unlikely to affect the tagged protein's biochemical properties. HSV-tag is an epitope tag composed of a 12 residue peptide. This antibody recognizes the HSV-tag fused to either the amino- or carboxy-terminus of targeted proteins.

References

Note: This product is for in vitro research use only