

CRISPR-Cas9 Antibody

Catalog No: #48200

Package Size: #48200-1 50ul #48200-2 100ul

Orders: order@signalwayantibody.com

Support: tech@signalwayantibody.com

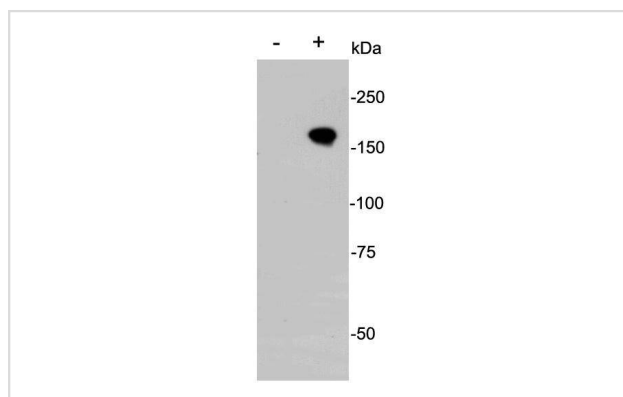
Description

| | |
|-----------------------|--|
| Product Name | CRISPR-Cas9 Antibody |
| Host Species | Rabbit |
| Clonality | Polyclonal |
| Purification | Immunogen affinity purified |
| Applications | WB |
| Immunogen Description | peptide |
| Other Names | Cas9 antibody CRISPR-associated endonuclease Cas9/Csn1 antibody CRISPR-Cas9/Csn1 antibody csn1 antibody SpyCas9 antibody |
| Accession No. | Swiss-Prot#: |
| Formulation | 1*TBS (pH7.4), 1%BSA, 40%Glycerol. Preservative: 0.05% Sodium Azide. |
| Storage | Store at -20°C |

Application Details

WB: 1:2,000-1:5,000 ICC: 1:200-1:500

Images



Western blot analysis on cas9 transfected 293 cells (+) and non transected 293 cells (-).

Background

The Clustered Regularly Interspaced Short Palindromic Repeats (CRISPR) Type II system is currently the most commonly used RNA-Guided Endonuclease technology for genome engineering. There are two distinct components to this system: (1) a guide RNA and (2) an endonuclease, in this case the CRISPR associated (Cas) nuclease, Cas9. The gRNA/Cas9 complex is recruited to the target sequence by the base-pairing between the gRNA sequence and the complement to the target sequence in the genomic DNA. For successful binding of Cas9, the genomic target sequence must also contain the correct Protospacer Adjacent Motif (PAM) sequence immediately following the target sequence.

References

Note: This product is for in vitro research use only