

eNOS Antibody

Catalog No: #48217

Package Size: #48217-1 50ul #48217-2 100ul

Orders: order@signalwayantibody.comSupport: tech@signalwayantibody.com

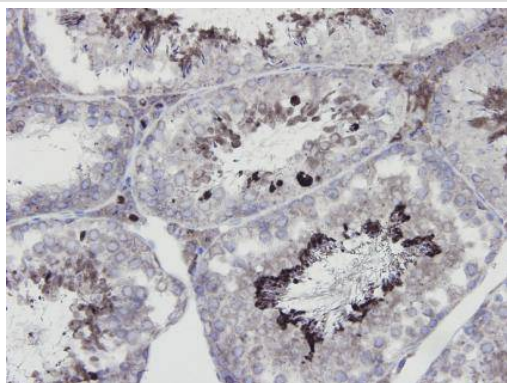
Description

Product Name	eNOS Antibody
Host Species	Rabbit
Clonality	Polyclonal
Purification	ProA affinity purified
Applications	IHC
Species Reactivity	Hu, Ms, Rt
Immunogen Description	peptide
Other Names	Constitutive NOS antibody EC NOS antibody EC-NOS antibody ecNOS antibody Endothelial nitric oxidase synthase antibody Endothelial nitric oxide synthase antibody Endothelial nitric oxide synthase 3 antibody Endothelial NOS antibody eNOS antibody Nitric oxide synthase 3 (endothelial cell) antibody Nitric oxide synthase 3 antibody Nitric oxide synthase 3 endothelial cell antibody Nitric oxide synthase endothelial antibody Nitric oxide synthase, endothelial antibody NOS 3 antibody NOS III antibody NOS type III antibody NOS3 antibody NOS3_HUMAN antibody NOSIII antibody
Accession No.	Swiss-Prot#:P29474
Uniprot	P29474
GeneID	4846;
Formulation	1*TBS (pH7.4), 1%BSA, 40%Glycerol. Preservative: 0.05% Sodium Azide.
Storage	Store at -20°C

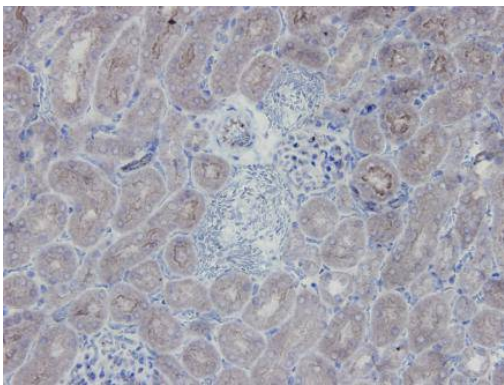
Application Details

IHC: 1:50-1:100

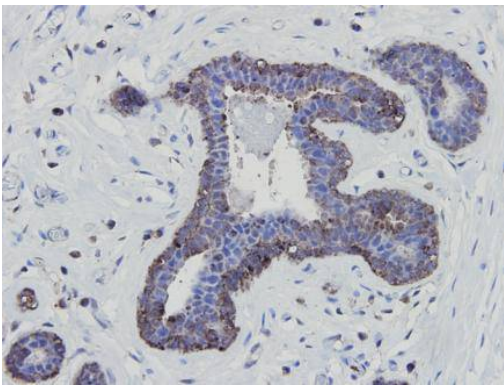
Images



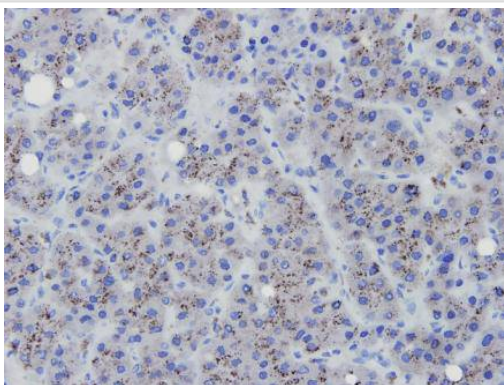
Immunohistochemical analysis of paraffin-embedded mouse testis tissue using anti- eNOS rabbit polyclonal antibody.



Immunohistochemical analysis of paraffin-embedded mouse kidney tissue using anti- eNOS rabbit polyclonal antibody.



Immunohistochemical analysis of paraffin-embedded human mammary gland tissue using anti-eNOS rabbit polyclonal antibody.



Immunohistochemical analysis of paraffin-embedded human liver carcinoma tissue using anti-eNOS rabbit polyclonal antibody.

Background

Endothelial NOS (eNOS), also known as nitric oxide synthase 3 (NOS3), generates NO in blood vessels and is involved with regulating vascular function. The gene coding for eNOS is located on Chromosome 7. NO mediates vascular endothelial growth factor (VEGF)-induced angiogenesis in coronary vessels and promotes blood clotting through the activation of platelets. A constitutive Ca^{2+} dependent NOS provides a basal release of NO. eNOS is associated with "caveolae" a component of plasma membranes surrounding cells, and the membranes of Golgi bodies within cells. eNOS localisation to endothelial membranes is mediated by cotranslational N-terminal myristoylation and post-translational palmitoylation.

References

Note: This product is for in vitro research use only