

# Lamin B1 Antibody

Catalog No: #48220



Package Size: #48220-1 50ul #48220-2 100ul

Orders: [order@signalwayantibody.com](mailto:order@signalwayantibody.com)  
Support: [tech@signalwayantibody.com](mailto:tech@signalwayantibody.com)

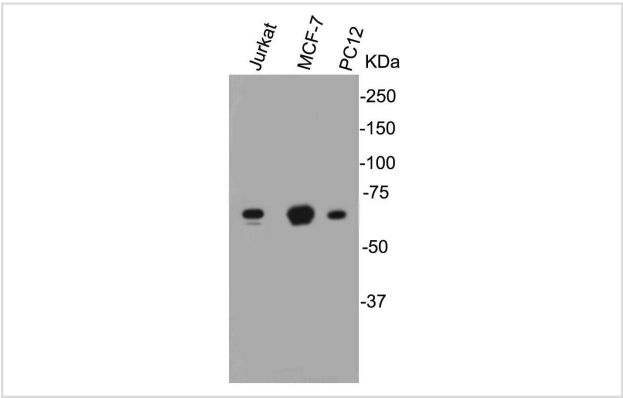
## Description

Product Name	Lamin B1 Antibody
Host Species	Rabbit
Clonality	Polyclonal
Purification	Peptide affinity purified
Applications	WB
Species Reactivity	Hu, Ms, Rt
Immunogen Description	peptide
Other Names	ADLD antibody lamin B1 antibody Lamin-B1 antibody LMN antibody LMN2 antibody LMNB antibody Lmnb1 antibody LMNB1_HUMAN antibody MGC111419 antibody OTTHUMP00000159218 antibody
Accession No.	Swiss-Prot#:P20700
Uniprot	P20700
GeneID	4001;
Calculated MW	67 kDa
Formulation	1*TBS (pH7.4), 0.5%BSA, 40%Glycerol. Preservative: 0.05% Sodium Azide.
Storage	Store at -20°C

## Application Details

WB: 1:1,000

## Images



Western blot analysis on different cell lysates using anti-Lamin B1 rabbit polyclonal antibodies.

## Background

Lamin-B1 is a protein that in humans is encoded by the LMNB1 gene. The nuclear lamina consists of a two-dimensional matrix of proteins located next to the inner nuclear membrane. The lamin family of proteins make up the matrix and are highly conserved in evolution. During mitosis, the lamina matrix is reversibly disassembled as the lamin proteins are phosphorylated. Lamin proteins are thought to be involved in nuclear stability, chromatin structure and gene expression. Vertebrate lamins consist of two types, A and B. This gene encodes one of the two B type proteins, B1. Lamin B, along

with heterochromatin, is anchored to the inner surface of the nuclear membrane by the lamin B receptor. LMNB1 has been shown to interact with Thymopoietin.

## References

---

---

Note: This product is for in vitro research use only