

Metadherin(LYRIC) Antibody

Catalog No: #48236



Package Size: #48236-1 50ul #48236-2 100ul

Orders: order@signalwayantibody.com
Support: tech@signalwayantibody.com

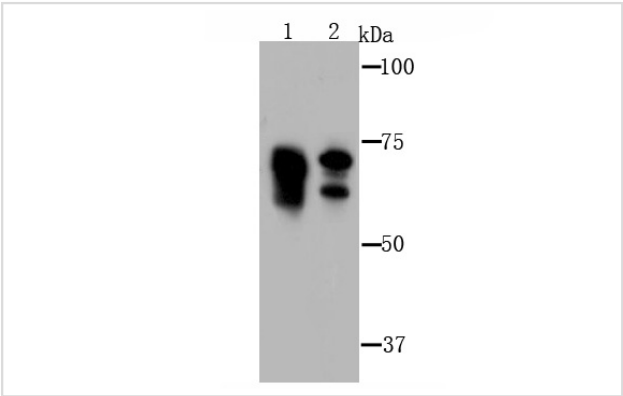
Description

Product Name	Metadherin(LYRIC) Antibody
Purification	Peptide affinity purified
Applications	WB,ICC,IHC,FC
Species Reactivity	Hu, Ms
Immunogen Description	Recombinant protein
Other Names	3D3 antibody 3D3/LYRIC antibody AEG 1 antibody AEG-1 antibody AEG1 antibody Astrocyte elevated gene 1 antibody Astrocyte elevated gene-1 protein antibody LYRIC antibody LYRIC/3D3 antibody LYRIC_HUMAN antibody Lysine rich CEACAM1 associated protein antibody Lysine rich CEACAM1 co isolated protein antibody Lysine-rich CEACAM1 co-isolated protein antibody Metadherin antibody Metastasis adhesion protein antibody MTDH antibody Protein LYRIC antibody
Accession No.	Swiss-Prot#:Q86UE4
Uniprot	Q86UE4
GeneID	92140;
Calculated MW	64 kDa
Formulation	1*TBS (pH7.4), 1%BSA, 40%Glycerol. Preservative: 0.05% Sodium Azide.
Storage	Store at -20°C

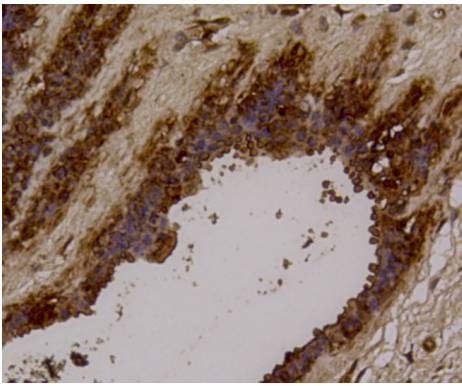
Application Details

WB: 1:500-1:2,000
IHC: 1:100-1:500
ICC: 1:50-1:200
FC: 1:50-1:200

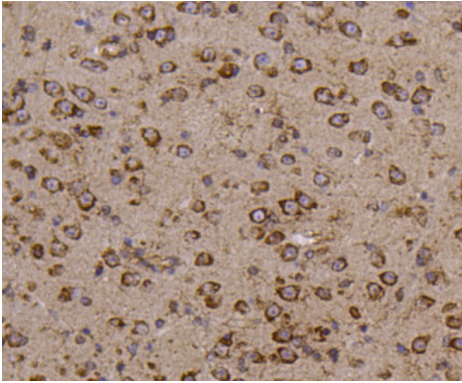
Images



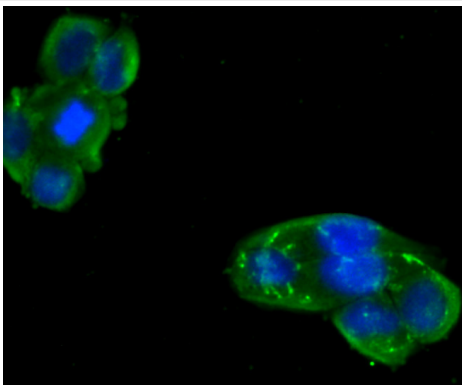
Western blot analysis of Metadherin(LYRIC) on human skeletal muscle tissue (1) and MCF-7 cell (2) lysate using anti-Metadherin(LYRIC) antibody at 1/1,000 dilution.



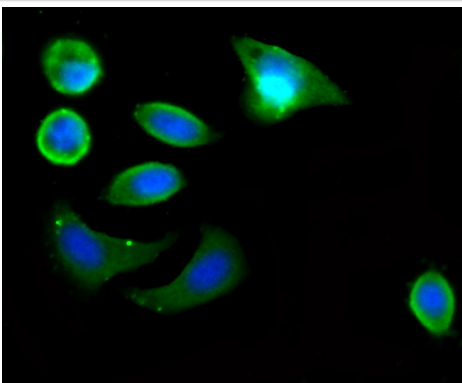
Immunohistochemical analysis of paraffin-embedded human breast tissue using anti-Metadherin(LYRIC) antibody. Counter stained with hematoxylin.



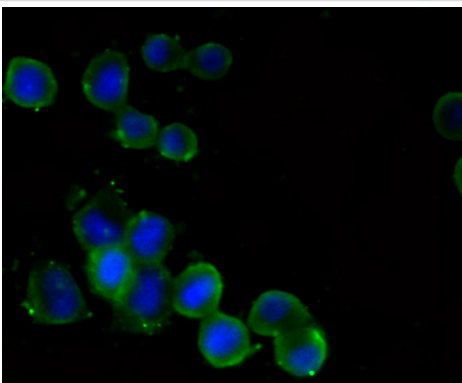
Immunohistochemical analysis of paraffin-embedded mouse brain tissue using anti-Metadherin(LYRIC) antibody. Counter stained with hematoxylin.



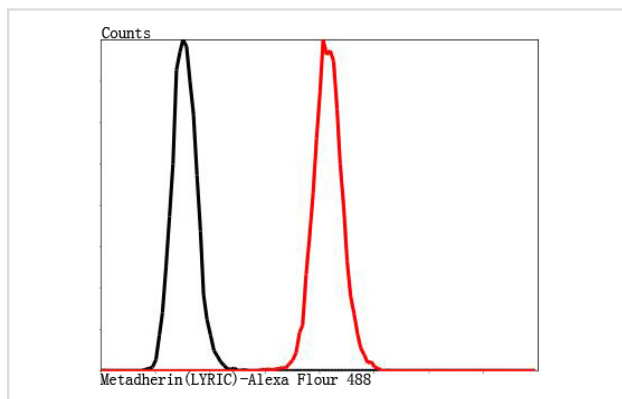
ICC staining Metadherin(LYRIC) in HeLa cells (green). The nuclear counter stain is DAPI (blue). Cells were fixed in paraformaldehyde, permeabilised with 0.25% Triton X100/PBS.



ICC staining Metadherin(LYRIC) in MCF-7 cells (green). The nuclear counter stain is DAPI (blue). Cells were fixed in paraformaldehyde, permeabilised with 0.25% Triton X100/PBS.



ICC staining Metadherin(LYRIC) in N2A cells (green). The nuclear counter stain is DAPI (blue). Cells were fixed in paraformaldehyde, permeabilised with 0.25% Triton X100/PBS.



Flow cytometric analysis of SH-SY5Y cells with Metadherin(LYRIC) antibody at 1/100 dilution (red) compared with an unlabelled control (cells without incubation with primary antibody; black).

Background

MTDH (metastasis adhesion protein), also known as astrocyte elevated gene-1 protein (AEG1) or lysine-rich CEACAM1 co-isolated protein (LYRIC), is a 582 amino acid single-pass membrane protein. Overexpressed in various cancers, MTDH activates the transcription factor NF κ B and promotes anchorage-independent growth of immortalized astrocytes and melanocytes, which are key components of tumor growth. MTDH is also thought to enhance the seeding of tumor cells to the target organ endothelium. Localized mainly to the endoplasmic reticulum membrane, MTDH also translocates from the cytoplasm to the nucleus when induced by TNF α . MTDH also localizes to tight junctions (TJ) during the maturation of TJ complexes in epithelial cells. MTDH is found at highest levels in heart, skeletal muscle, tongue and small intestine.

References

Note: This product is for in vitro research use only