

IkappaB alpha Antibody

Catalog No: #48264



Package Size: #48264-1 50ul #48264-2 100ul

Orders: order@signalwayantibody.com
Support: tech@signalwayantibody.com

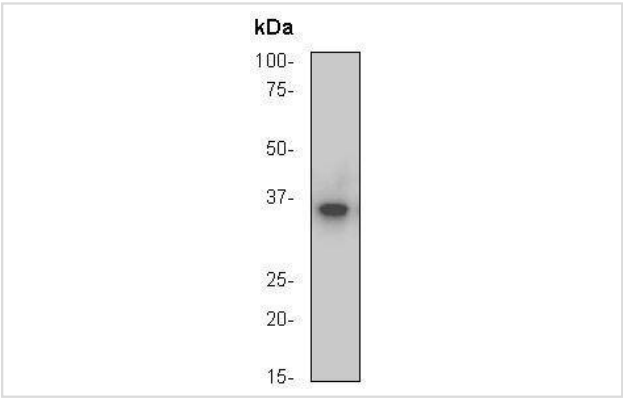
Description

Product Name	IkappaB alpha Antibody
Host Species	Rabbit
Clonality	Monoclonal
Clone No.	1.00E+03
Purification	Protein A purified
Applications	WB, IHC, ICC, IP
Species Reactivity	Hu, Ms, Rt
Immunogen Description	peptide
Other Names	I kappa B alpha antibody I-kappa-B-alpha antibody IkappaBalpha antibody IκB-alpha antibody IKBA antibody IKBA_HUMAN antibody IKBalpha antibody MAD 3 antibody MAD3 antibody Major histocompatibility complex enhancer-binding protein MAD3 antibody NF kappa B inhibitor alpha antibody NF-kappa-B inhibitor alpha antibody NFKBI antibody NFKBIA antibody Nuclear factor of kappa light chain gene enhancer in B cells antibody Nuclear factor of kappa light polypeptide gene enhancer in B cells inhibitor alpha antibody
Accession No.	Swiss-Prot#:P25963
Uniprot	P25963
GeneID	4792;
Calculated MW	35 kDa
Formulation	1*TBS (pH7.4), 1%BSA, 40%Glycerol. Preservative: 0.05% Sodium Azide.
Storage	Store at -20°C

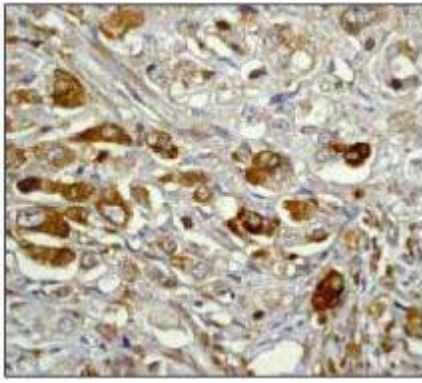
Application Details

WB: 1:1,000 IHC: 1:100ICC: 1:100 IP: 1:10-100

Images



Western blot analysis Hela cell lysate using IκB-α RabMAb.



Immunohistochemical analysis of paraffin-embedded human prostate carcinoma using IκB-α RabMAb.

Background

The NF-κB/Rel transcription factors are present in the cytosol in an inactive state, complexed with the inhibitory IκB-α protein. In response to many different NF-κB-inducing agents including T-cell mitogens, proinflammatory cytokines, and viral transactivators the inhibitory IκB-α is rapidly phosphorylated and degraded. Phosphorylation of IκB-α at Ser32 and Ser36 has been shown to stimulate conjugation with ubiquitin and subsequent degradation of IκB-α. Phosphorylation of IκB-α at Ser32 and Ser36 is critical for activation of NF-κB, which then translocates to the nucleus and induces transcription of genes that protect organism.

References

Note: This product is for in vitro research use only