

## ALAS2 Antibody

Catalog No: #48271



Package Size: #48271-1 50ul #48271-2 100ul

Orders: order@signalwayantibody.com

Support: tech@signalwayantibody.com

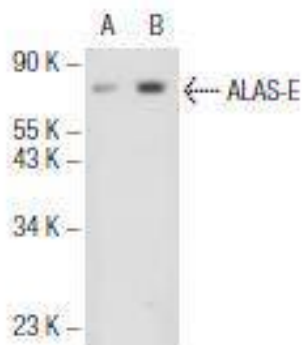
## Description

Product Name	ALAS2 Antibody
Host Species	Mouse
Clonality	Monoclonal
Clone No.	12-D
Purification	ProA affinity purified
Applications	WB, IP, IF, IHC(P)
Species Reactivity	Hu, Ms, Rt
Immunogen Description	peptide
Other Names	5 @aminolevulinate synthase erythroid specific antibody 5 aminolevulinate synthase 2 antibody 5 aminolevulinate synthase 5 aminolevulinate synthase 2 antibody 5 aminolevulinate synthase erythroid specific mitochondrial antibody 5 aminolevulinic acid synthase 2 antibody 5 aminolevulinic acid synthase antibody 5-aminolevulinate synthase antibody 5-aminolevulinic acid synthase 2 antibody Alas 2 antibody ALAS antibody ALAS E antibody ALAS, erythroid antibody ALAS-E antibody Alas2 antibody ALASE antibody Aminolevulinate delta synthase 2 antibody Aminolevulinic acid synthase 2, erythroid antibody ANH1 antibody ASB antibody Delta ALA synthase 2 antibody Delta ALA synthetase antibody Delta aminolevulinate synthase 2 antibody Delta aminolevulinate synthase antibody Delta-ALA synthase 2 antibody Delta-aminolevulinate synthase 2 antibody Erythroid specific ALAS antibody erythroid-specific antibody FLJ93603 antibody HEM0_HUMAN antibody mitochondrial antibody OTTHUMP00000023388 antibody OTTHUMP00000023389 antibody OTTMUSP00000020679 antibody RP23-338A17.1 antibody SIDBA1 antibody XLDPP antibody XLEPP antibody XLSA antibody
Accession No.	Swiss-Prot#:P22557
Uniprot	P22557
GeneID	212;
Calculated MW	60 kDa
Formulation	1*TBS (pH7.4), 1%BSA, 40%Glycerol. Preservative: 0.05% Sodium Azide.
Storage	Store at -20°C

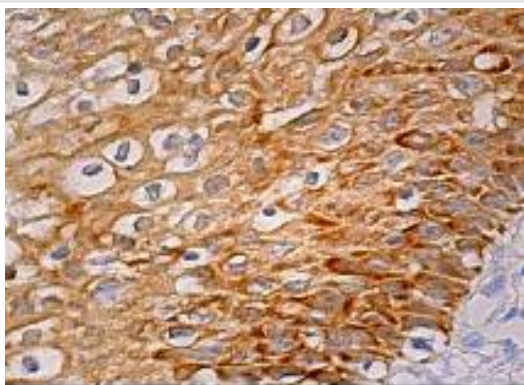
## Application Details

WB: 1:100-1:1,000IHC: 1:50-500IP: 1-2 µg per 100-500 µg of total protein (1 ml of cell lysate)

## Images



Western blot analysis of ALAS-E expression in non-transfected (A) and human ALAS-E transfected (B) 293T whole cell lysates.



Immunoperoxidase staining of formalin fixed, paraffin-embedded human cervix tissue showing cytoplasmic staining of squamous epithelial cells.

## Background

5-aminolevulinate synthase 1 (ALAS-H) and 2 (ALAS-E) are two isoforms of ALAS, an enzyme catalyzing the first step of the heme biosynthetic pathway in mammals. The erythroid-specific isoenzyme, ALAS-E, regulates the first step of hematopoietic cell differentiation and iron metabolism in the liver. ALAS-H is a housekeeping protein which mediates synthesis of early heme in the mitochondria of most cells. Succinyl CoA associates with ALAS-E in protein conformation change and translocation of ALAS-E into the mitochondria and does not interact with ALAS-H. The ALAS-E 5'-flanking region contains binding sites for nuclear activators such as GATA-1, NF-E2 and EKLf. Since the ALAS gene maps to the X chromosome, mutation of the gene leads to the pyridoxine-refractory X-linked sideroblastic anemia.

## References

Note: This product is for in vitro research use only