

Alpha-Synuclein Antibody

Catalog No: #48273



Package Size: #48273-1 50ul #48273-2 100ul

Orders: order@signalwayantibody.comSupport: tech@signalwayantibody.com

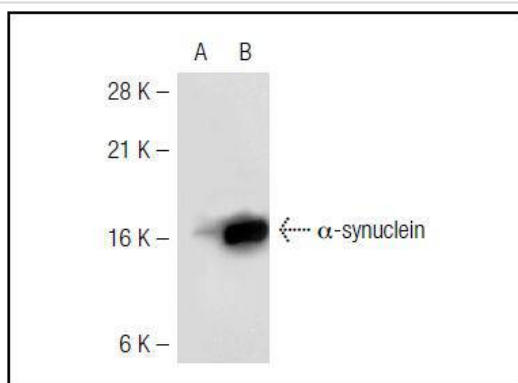
Description

Product Name	Alpha-Synuclein Antibody
Host Species	Mouse
Clonality	Monoclonal
Clone No.	2G5
Purification	ProA affinity purified
Applications	WB, IP, IF
Species Reactivity	Hu
Immunogen Description	peptide
Other Names	Alpha synuclein antibody Alpha-synuclein antibody Alpha-synuclein, isoform NACP140 antibody alphaSYN antibody MGC105443 antibody MGC110988 antibody MGC127560 antibody MGC64356 antibody NACP antibody Non A beta component of AD amyloid antibody Non A4 component of amyloid antibody Non A4 component of amyloid precursor antibody Non-A beta component of AD amyloid antibody Non-A-beta component of alzheimers disease amyloid , precursor of antibody Non-A4 component of amyloid precursor antibody Non-A4 component of amyloid, precursor of antibody OTTHUMP00000218549 antibody OTTHUMP00000218551 antibody OTTHUMP00000218552 antibody OTTHUMP00000218553 antibody OTTHUMP00000218554 antibody PARK 1 antibody PARK 4 antibody PARK1 antibody PARK4 antibody Parkinson disease (autosomal dominant, Lewy body) 4 antibody Parkinson disease familial 1 antibody PD 1 antibody PD1 antibody SNCA antibody Snca synuclein, alpha (non A4 component of amyloid precursor) antibody SYN antibody Synuclein alpha antibody Synuclein alpha 140 antibody Synuclein, alpha (non A4 component of amyloid precursor) antibody SYUA_HUMAN antibody
Accession No.	Swiss-Prot#:P37840
Uniprot	P37840
GeneID	6622;
Calculated MW	19 kDa
Formulation	1*TBS (pH7.4), 1%BSA, 40%Glycerol. Preservative: 0.05% Sodium Azide.
Storage	Store at -20°C

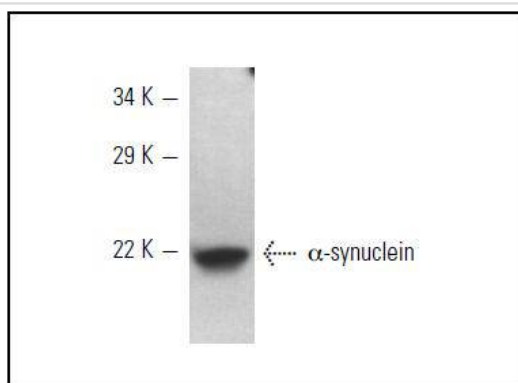
Application Details

WB: 1;100-1:1,000IP: 1-2 µg per 100-500 µg of total protein(1 ml of cell lysate)

Images



Western blot analysis of α -synuclein expression in non-transfected (A) and human α -synuclein transfected (B) 293T whole cell lysates.



Western blot analysis of α -synuclein expression in SH-SY5Y whole cell lysate.

Background

The synuclein family members, including β -synuclein (also designated NACP for non-Amyloid component) and γ -synuclein, are predominantly expressed in the brain and are speculated to be involved in synaptic regulation and neuronal plasticity. β -synuclein is localized to neuronal cell bodies and synapses. β -synuclein was first identified as a component of Alzheimer's disease amyloid plaques. Abnormal platelet function in Alzheimer's disease has been demonstrated. During megakaryocytic differentiation β -synuclein has been found to be upregulated, while γ -synuclein is downregulated, indicating that coordinate expression of synucleins may be important during hematopoietic cell differentiation. A mutant form of β -synuclein has been found in patients with early onset Parkinson's disease.

References

Note: This product is for in vitro research use only