

## TIMP-2 Antibody

Catalog No: #48343

Package Size: #48343-1 50ul #48343-2 100ul

Orders: [order@signalwayantibody.com](mailto:order@signalwayantibody.com)Support: [tech@signalwayantibody.com](mailto:tech@signalwayantibody.com)

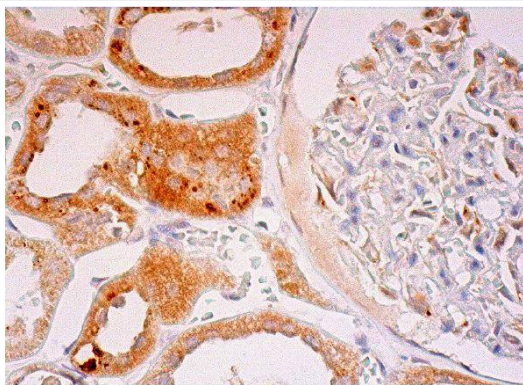
## Description

Product Name	TIMP-2 Antibody
Host Species	Goat
Clonality	Polyclonal
Purification	Immunogen affinity purified
Applications	WB, IP, IF, IHC
Species Reactivity	Hu, Ms, Rt
Immunogen Description	peptide
Other Names	CSC 21K antibody CSC-21K antibody CSC21K antibody Metalloproteinase inhibitor 2 antibody Metalloproteinase inhibitor 2 precursor antibody TIMP 2 antibody TIMP metalloproteinase inhibitor 2 antibody TIMP-2 antibody TIMP2 antibody TIMP2_HUMAN antibody Tissue Inhibitor of Metalloproteinase 2 antibody Tissue inhibitor of metalloproteinases 2 antibody
Accession No.	Swiss-Prot#:P16035
Uniprot	P16035
GeneID	7077;
Calculated MW	21 kDa
Formulation	1*TBS (pH7.4), 1%BSA, 40%Glycerol. Preservative: 0.05% Sodium Azide.
Storage	Store at -20°C

## Application Details

WB: 1:1,000 IHC: 1:50-500 IP: 1-2 µg per 100-500 µg of total protein

## Images



Immunoperoxidase staining of formalin fixed, paraffin-embedded human kidney tissue showing cytoplasmic staining of cells in glomeruli and cells in tubules.

## Background

TIMP-1, TIMP-2, TIMP-3 and TIMP-4 (for tissue inhibitor of metalloproteinases-1, -2, -3 and -4) complex with metalloproteinases such as collagenases, gelatinases and stromelysins, resulting in irreversible inactivation of the metalloproteinase. TIMP-1 was found to be identical to EPA

(erythroid-potential activity). Parathyroid hormone has been shown to be a regulator of TIMP-2 in osteoblastic cells. TIMP-3 may be involved in regulating trophoblastic invasion of the uterus as well as in regulating remodeling of the extracellular matrix during the folding of epithelia, and in the formation, branching and expansion of epithelial tubes. TIMP-4 is most highly expressed in heart and low levels of TIMP-4 are expressed in liver, brain, lung, thymus and spleen.

## References

---

Note: This product is for in vitro research use only