

## Smad3 Polyclonal Antibody

Catalog No: #41445



Package Size: #41445-1 50ul #41445-2 100ul

Orders: [order@signalwayantibody.com](mailto:order@signalwayantibody.com)Support: [tech@signalwayantibody.com](mailto:tech@signalwayantibody.com)

## Description

Product Name	Smad3 Polyclonal Antibody
Host Species	Rabbit
Clonality	Polyclonal
Purification	The antibody was affinity-purified from rabbit antiserum by affinity-chromatography using epitope-specific immunogen.
Applications	WB IHC ELISA
Species Reactivity	Hu Ms Rt
Specificity	Smad3 Polyclonal Antibody detects endogenous levels of Smad3 protein.
Immunogen Type	peptide
Immunogen Description	Synthesized peptide derived from human Smad3 around the non-phosphorylation site of T179.
Target Name	Smad3
Other Names	SMAD3; MADH3; Mothers against decapentaplegic homolog 3; MAD homolog 3; Mad3; Mothers against DPP homolog 3; hMAD-3; JV15-2; SMAD family member 3; SMAD 3; Smad3; hSMAD3
Accession No.	Swiss-Prot: P84022NCBI Gene ID: 4088
Uniprot	P84022
GeneID	4088;
SDS-PAGE MW	50kd
Concentration	1mg/ml
Formulation	Liquid in PBS containing 50% glycerol, 0.5% BSA and 0.02% sodium azide.
Storage	Store at -20°C/1 year

## Application Details

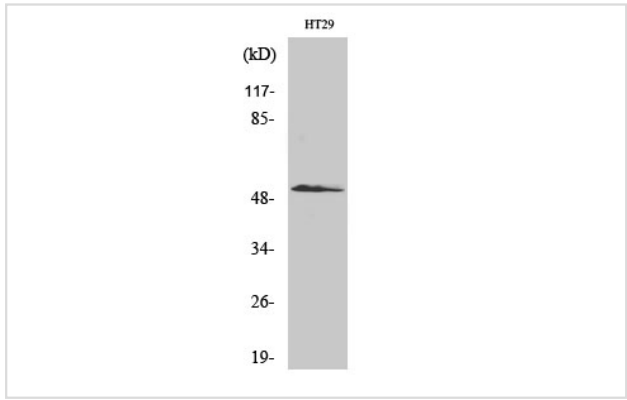
Western Blot: 1/500 - 1/2000.

Immunohistochemistry: 1/100 - 1/300.

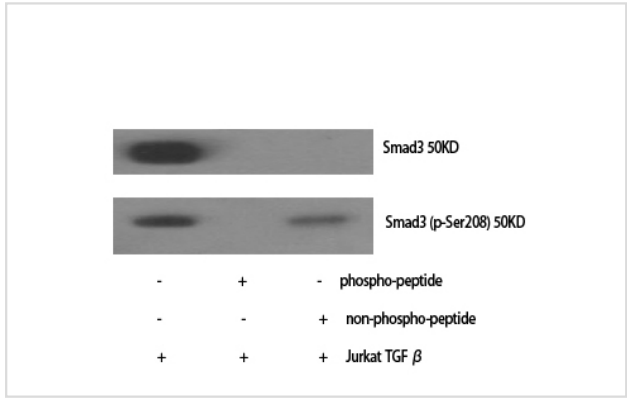
ELISA: 1/10000.

Not yet tested in other applications.

## Images



Western Blot analysis of HT29 cells using Smad3 Polyclonal Antibody



Western Blot analysis of Jurkat+TGF cells using Smad3 Polyclonal Antibody

Note: This product is for in vitro research use only